

Saskatchewan's **Major Capital Action Plan**

Delivering for You | Budget 2025-26

Statement from the Minister



I am pleased to present the Major Capital Action Plan for 2025-26.

Through the 2025-26 Capital Budget, our government will invest in key infrastructure priorities that support our growing province's needs. Budget 2025-26 includes approximately \$1.9 billion in capital projects across Executive Government and approximately \$2.8 billion in capital projects by the province's commercial Crown corporations.

The 2025-26 Budget delivers the largest total capital budget in Saskatchewan history, the largest Crown Corporation capital budget in Saskatchewan history and the largest Executive Government capital budget in Saskatchewan history. With Budget 2025-26, our government is firmly on track to exceed the Growth Plan goal of investing \$30 billion in infrastructure by 2030.

The Ministry of SaskBuilds and Procurement continues to support the delivery of major infrastructure projects across the province in the education, health and government services sectors to ensure the province meets the growing needs of Saskatchewan families and communities.

From providing youth additional supports in their classrooms, ensuring that everyone has access to the health care they require, and supporting strong communities, we are creating a bright future and better quality of life for all Saskatchewan people.

A handwritten signature in black ink, appearing to read "David Marit". The signature is fluid and cursive, written over a light blue horizontal line.

That is how we are delivering for you.

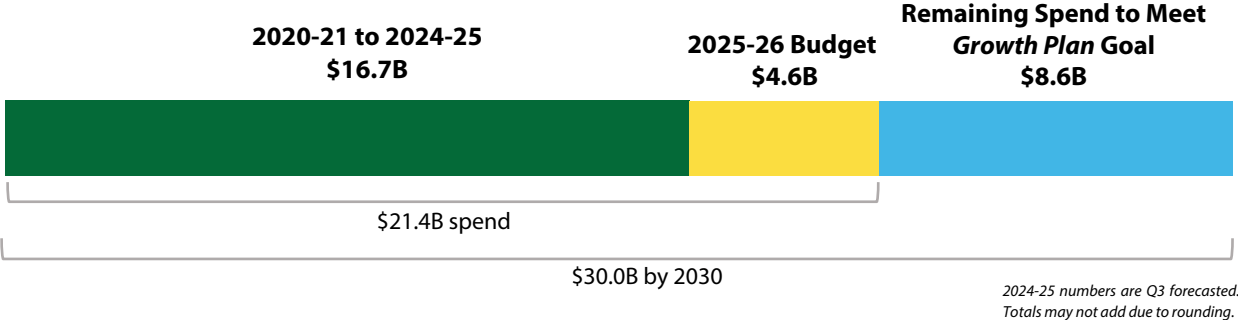
Honourable David Marit
Minister of SaskBuilds and Procurement

Major Capital Action Plan 2025-26

Investments in infrastructure support a growing province and a better quality of life for Saskatchewan people, with a focus on education, health care and the well-being of our communities. It is more important than ever to invest in public infrastructure that supports a rapidly growing province.

As of October 1, 2024, Saskatchewan’s population was close to 1.25 million (M) people, with year-over-year growth of 26,989 people, or 2.2 per cent. This record-breaking milestone is mostly driven by international migration as the province welcomed over 24,000 new immigrants in 2024. Going forward, Saskatchewan is expected to see steady population growth over the medium term, reinforcing the need for infrastructure investment that keeps pace with this growth.

The 2025-26 Budget invests \$1.868 billion (B) in Executive Government infrastructure to build new schools, healthcare facilities, roads and other important infrastructure to continue to meet the growing needs of Saskatchewan families and communities. The 2025-26 Saskatchewan Capital Plan (Capital Plan) brings Government’s infrastructure investment to over \$52.1B since 2008-09 and keeps Government firmly on track to exceed the *Growth Plan* goal of investing \$30B in infrastructure by 2030.



This Major Capital Action Plan speaks to key infrastructure investments in the Capital Plan in the health, education and government services sectors, progress to date on these investments, and planned advancements in 2025-26. The Major Capital Action Plan does not include projects in early business case stages that may be contemplated for construction in the future.

The Ministry of SaskBuilds and Procurement

The Ministry of SaskBuilds and Procurement (SBP) provides central coordination, project management and delivery of major infrastructure projects and minor maintenance work for other ministries and agencies to support public services in Saskatchewan.

Specifically, SBP is responsible for the planning, design and delivery of major infrastructure projects in the health, education and government services sectors in Saskatchewan. By leveraging the expertise of government infrastructure professionals together under a single organization to provide better service and outcomes, SBP delivers critical infrastructure to meet the needs of Saskatchewan families and communities.

Health Infrastructure

Investment in health infrastructure totals \$656.9M in the 2025-26 Budget. SBP delivers major health capital projects such as new hospitals and health facilities in collaboration with the Ministry of Health and sector partners. This work includes detailed project planning, management and delivery. Projects include:

Projects in Construction

Prince Albert Victoria Hospital

Current Stage: Construction Delivery Model: Progressive Design-Build

This project will construct a new multi-level acute care tower. Once complete, the number of beds at Victoria Hospital will be 242, up from the current 173 beds. Other upgrades will include a larger emergency department and enhanced medical imaging services, including an MRI and second CT scanner.

In January 2024, the design-build agreement was awarded to PCL Construction Management Inc. (PCL). The value of the design-build contract is \$898M and is inclusive of the Design and Early Works agreement awarded through a public procurement to PCL in December 2022.



Rendering of the Prince Albert Victoria Hospital.



Rendering of the Prince Albert Victoria Hospital.

The agreement with PCL includes the design and construction of a new acute care tower connected directly north of the existing facility. The new tower features a heliport on the roof, an expanded emergency department, larger operating rooms, pediatrics, maternity, a Neonatal Intensive Care Unit, new medical imaging and a First Nations and Métis Cultural space, among other key services.

Prince Albert Grand Council has partnered with the Government of Saskatchewan and the Saskatchewan Health Authority on designing the cultural space that will be central to the new main entrance. PCL will engage with local and Indigenous vendors to deliver services for the construction.

This project will provide people with improved, expanded acute care and mental health and addictions services closer to home, benefitting the growing population in Prince Albert and northern Saskatchewan for many years to come.

- ✓ Groundbreaking was completed in May 2024, followed by the assembly of tower cranes, major excavation and foundation work.
- ✓ The concrete structure for the new tower is on track for completion by late 2025, with exterior building envelope work commencing soon.

Weyburn General Hospital

Current Stage: Construction Delivery Model: Design-Build

The existing Weyburn General Hospital will be replaced with an integrated facility that includes 25 acute care and 10 in-patient mental health beds. The new hospital will be owned and operated by the Saskatchewan Health Authority. It will also include an Emergency Medical Services garage and an adjacent heliport to support safer and more efficient patient transport.



Rendering of the new Weyburn General Hospital.

- ✓ In December 2022, Wright Construction was selected through a two-phase procurement process to design and build the facility.
- ✓ The existing Weyburn Hospital will be demolished once the new hospital is open to the public.

La Ronge Long-Term Care Home

Current Stage: Construction Delivery Model: Design-Bid-Build



Construction progress on the La Ronge Long-Term Care home.

This new three-storey long-term care (LTC) home will have two wings per floor and 80 beds, which is an increase of 64 beds from the current space in the health centre. It will include living areas, tub rooms, family rooms, a traditional healing space, a serenity room, a commercial kitchen, and include wound care, dental and podiatry suites. This new LTC home will be connected to the existing Health Centre.

The Health Centre will remain in operation during construction, with the transfer of LTC residents, programs and equipment occurring once the new home is complete. Renovations to this existing space are expected to start after the area is vacated. These renovations will provide increased Health Centre space and improve several program areas, including therapies, an adult day program and a new hemodialysis unit.

- ✓ The project achieved 50 per cent construction completion in February 2025.



Rendering of the La Ronge Long-Term Care home.

Saskatoon Urgent Care Centre

Current Stage: Construction

Delivery Model: Project Development Agreement



Site work for the Saskatoon Urgent Care Centre.

The new Saskatoon Urgent Care Centre (UCC) will provide Saskatoon residents an alternative to emergency departments for illnesses and injuries that are not life-threatening, as well as offer mental health supports. The Government of Saskatchewan and Ahtahkakoop Cree Developments have signed a development agreement to partner on the delivery of the new facility.

The current location of Pleasant Hill School is the site for the Saskatoon UCC, which is a block away from St. Paul's Hospital. Having the UCC built nearby to provide an alternative option of care is intended to mitigate some of the capacity pressures in the emergency department at St. Paul's Hospital.

- ✓ Construction commenced in December 2024.

Regina Specialized Long-Term Care

Current Stage: Design

Delivery Model: Progressive Design-Build

This project aims to build capacity for future specialized bed demand in alignment with the July 2021 announcement to add 600 LTC beds to Regina. The new home is anticipated to include 240 specialized LTC beds to support the needs of residents with dementia, complex behavioral needs and other conditions requiring specialized care.

The new specialized LTC home will be built on a site owned by the Government of Saskatchewan that is located south of the Saskatchewan Polytechnic Regina Campus.

- ✓ The progressive design-build contract was executed in May 2024. The design will be completed in 2025.
- ✓ Site servicing work began in August 2024.

Grenfell Long-Term Care Home

Current Stage: Construction Procurement

Delivery Model: Design-Bid-Build

The new 33 bed Grenfell LTC home will replace Grenfell Pioneer Home. The new home will be built on vacant lands located at the northeast corner of Assiniboia Ave and Highway 47. The project is being delivered with a design-bid-build model.

Residents of the Grenfell Pioneer Home that closed in 2018 and were relocated will be offered the first opportunity to move into the new home once it is complete. The new home will include two spa tub rooms, a commercial kitchen, common living and dining spaces, administrative areas, a maintenance garage and parking stalls.

- ✓ Construction procurement is currently underway, and construction is anticipated to begin in summer 2025.

K-12 Education Infrastructure

SBP is supporting the delivery of \$191.3M in infrastructure investment in the education sector as part of the 2025-26 Budget. SBP supports the delivery of major capital projects in the K-12 education sector in collaboration with the Ministry of Education and school divisions across the province. Projects currently in delivery include:

Projects Nearing Completion

North Regina Joint-Use School

Current Stage: Construction

Delivery Model: Design-Bid-Build

This new school is being built on the site of the existing Imperial Community School between Broad Street North and Hamilton Street in Regina. It will replace and consolidate St. Peter, St. Michael, Imperial and McDermid elementary schools, which were all opened between 1950 and 1960. The Government of Saskatchewan is investing approximately \$65M into this new facility, with the City of Regina providing funding for the community space.

This facility will provide space for approximately 800 pre-kindergarten to Grade 8 students, 400 Public and 400 Catholic, with the ability to expand to accommodate up to 1,000 students. The facility will also include community space and a 51-space childcare centre, which includes 21 new spaces.



Construction progress on the new north Regina joint-use school.

- ✓ Westridge Construction was selected as the general contractor.
- ✓ Construction is ongoing and the school is expected to open in fall 2025.

Moose Jaw Joint-Use School

Current Stage: Construction

Delivery Model: Design-Bid-Build

This new pre-kindergarten to Grade 8 school replaces and consolidates Sacred Heart, St. Mary's, Empire and Westmount elementary schools. The new school will provide space for 900 pre-kindergarten to Grade 8 students, 500 Public and 400 Catholic, with the ability to expand and accommodate up to 1,100 students. Both sides of the facility will include adaptable learning environments and a shared community resource space.

The Government of Saskatchewan is investing nearly \$69M in funding for the planning, design and construction of the school.

- ✓ Graham Construction was selected as the general contractor for this project.
- ✓ Construction began in July 2023 and the school is anticipated to open in fall 2025.



Construction progress on the Moose Jaw Joint-Use School.



Saskatoon St. Frances Cree Bilingual School

Current Stage: Construction

Delivery Model: Design-Bid-Build

St. Frances Cree Bilingual School was established in 2007, and due to enrolment growth, has been offered at two separate locations as a temporary solution while this new school is being constructed. The new facility is expected to provide space for 700 pre-kindergarten to Grade 9 students, along with 70 childcare spaces. It will be located on the site of the former Sion Middle School in Saskatoon.

The Ministry of Education has worked in collaboration with Greater Saskatoon Catholic Schools and the Saskatoon Tribal Council to ensure the cultural needs of the students at St. Frances are being met. The three-storey school will include a research and learning greenhouse, an Elder's teaching room, a medicines lab, and other unique programming space, as well as a Child and Family Wellness Centre. The Government of Saskatchewan is investing approximately \$46M into this innovative project.

- ✓ Construction continues with the school anticipated to open in fall 2025.
- ✓ Graham Construction was selected as the general contractor.



Construction progress on the new St. Frances school.



Lanigan K-12 School

Current Stage: Construction

Delivery Model: Construction Management

This new school will replace Lanigan Elementary and Lanigan Central High School. It will have an estimated area of 4,829 square metres and will provide space for 400 students with the ability to expand and accommodate up to 450 students.

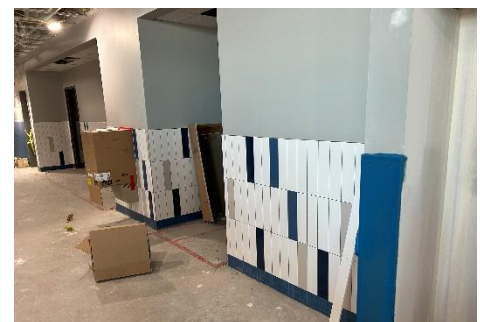
The Horizon School Division has worked collaboratively to ensure that the facility meets the needs of the Lanigan community. This facility will feature labs for Industrial Arts, Science, Home Economics and the Arts, as well as a large main gymnasium and a smaller secondary gym.

The Government of Saskatchewan is investing approximately \$26M into this new school. Horizon's Board of Education has contributed \$500,000 for the secondary gym included in this project.

- ✓ Quorex Construction was selected as the Construction Manager for this project.
- ✓ Construction of the new school remains on schedule since it started in July 2023.



Construction progress on the new Lanigan K-12 school.



Starting Construction in 2025-26

Harbour Landing Joint-Use School

Current Stage: Design

Delivery Model: Design-Bid-Build

This joint-use school will accommodate up to 500 Regina Public and up to 350 Regina Catholic students from Kindergarten to Grade 8, and has plans to include a childcare centre with 90 spaces. The design phase of the project is nearing completion with a focus on creating a modern learning environment that meets the educational needs of students.

The new facility will be located on the corner of Gordon Road and Campbell Street, in the Harbour Landing community of Regina. In January 2024, a site servicing agreement was signed by the Government of Saskatchewan and the City of Regina, which was a crucial step in advancing the project.



Rendering of the new Harbour Landing Joint-Use School.

✓ The procurement of a construction contractor is currently underway, and construction is anticipated to start in spring 2025.

Saskatoon City Centre Consolidation

Current Stage: Design

Delivery Model: Design-Bid-Build

This new pre-kindergarten to Grade 8 school will replace Princess Alexandra, King George and Pleasant Hill elementary schools. The new school will provide space for 350 students with the ability to expand and accommodate up to 400 students. The school will have state-of-the-art learning features with added community functions and services, including a 74-space childcare center.

In December 2024, six construction contractors were shortlisted to submit bids for the construction of the new school. Saskatoon Public Schools issued the Request for Qualifications and the shortlisted companies were selected through a competitive process. These firms will now proceed to the tender stage, where they are invited to provide detailed submissions to bid on the construction contract.

✓ Design on the project is nearing completion, with construction anticipated to begin in spring 2025.

Projects in Planning and Design

The following projects are in various stages of planning and design:

- **Regina Campbell High School Renovation:** This addition renovation project will include demolition of the vocation wing, foundation reinforcement and a rebuild of a portion of the wing.
- **Swift Current High School Renovation:** This phased renovation project will consist of replacing end of life mechanical and electrical systems, updating life safety systems and installation of fire suppression systems.
- **Saskatoon Brighton Joint-Use Elementary:** This facility between Saskatoon Public and Greater Saskatoon Catholic School Divisions will provide space for 1,650 kindergarten to Grade 8 students, 900 Public and 750 Catholic, with the ability to expand up to 2,050 students and will include 90 childcare spaces.
- **Conseil des Écoles Fransaskoises Prince Albert:** The facility will be designed to accommodate up to 350 pre-kindergarten to grade 12 students, including 51 childcare spaces.
- **Carlyle K-12 Consolidation:** This new school will replace and consolidate the existing Carlyle Elementary School and Gordon F. Kells High School. The new school will accommodate up to 500 students from pre-kindergarten to Grade 12 and will also include a 51-space childcare centre. The Town of Carlyle has secured and dedicated 21 acres of land for the new school site.
- **Conseil des Écoles Fransaskoises Saskatoon:** The new pre-kindergarten to grade 6 school will accommodate up to 400 students and provide 80 childcare spaces to the community.
- **Minahik Waskahigan High School:** This school in the community of Pinehouse will accommodate up to 175 students between grade 7 and grade 12.
- **Balgonie Greenall High School Renovation:** This addition renovation project will upgrade end of life structural and architectural elements and look to address current growth and programming needs including space for visual arts, additional classrooms and student support.
- **Regina Southeast Joint-Use Elementary:** This new facility between Regina Catholic and Regina Public School Divisions will provide space for 1,000 kindergarten to Grade 8 students, 400 Catholic and 600 Public, with the ability to expand up to 1,400 student and will include 180 childcare spaces.
- **Saskatoon Holmwood Joint-Use High School:** This new facility between Saskatoon Public and Greater Saskatoon Catholic School Divisions will provide space for 2,900 Grade 9 to Grade 12 students, 1,450 Public and 1,450 Catholic, with the ability to expand up to 3,600 students and will include a 90 childcare spaces.
- **Regina Southeast Joint-Use High School:** This new facility between Regina Catholic and Regina Public School Divisions will provide space for 1,600 Grade 9 to Grade 12 students, 800 Catholic and 800 Public, with the ability to expand up to 2,000 students.

Post-Secondary Education

SBP supports the delivery of major capital projects in the post-secondary sector in collaboration with the Ministry of Advanced Education and post-secondary institutions.

The Government of Saskatchewan's continued investment in major capital projects for the post-secondary sector is vital for supporting education, innovation and economic growth in the province. Post-secondary investment supports *Saskatchewan's Growth Plan* and the *Labour Market Strategy* by aligning educational infrastructure and programming with the evolving needs of our economy and workforce.

In 2025-26, approximately \$16M will be invested in major capital projects throughout the post-secondary sector to focus on meeting labour market needs and ensuring safe, functional and efficient campuses across the province.

In support of the *Health Human Resources Action Plan*, the Government of Saskatchewan continues to expand health care training initiatives and invest in ongoing development of new domestic programs such as Occupational Therapy and Speech Language Pathology in Saskatoon, and Medical Laboratory Technology, Medical Radiologic Technician and Respiratory Therapy programs in Regina.

Investment in the Carlton Trail Technical Facility Building expansion in Humboldt will help support Saskatchewan's *Labour Market Strategy* by helping to train, retain and prepare workers in the skilled trades industry.

With this funding, approximately \$880M will have been invested in capital projects, including preventative maintenance for the post-secondary sector, since 2008-09.

Projects in Procurement

Saskatchewan Polytechnic New Saskatoon Campus: Skilled Trades and Technology Building

Current Stage: Procurement Delivery Model: Design-Build

Saskatchewan Polytechnic (Sask Polytech) currently delivers post-secondary education programs in 11 locations throughout Saskatoon. SBP and project partners are collaborating on the new Joseph A. Remail Saskatoon campus to provide centralized programming, training and administration services at Innovation Place Saskatoon. The Government of Saskatchewan is committing up to \$200M for the new campus to support Saskatchewan's *Growth Plan* goals, attract more students and encourage more investment in Saskatchewan.



An artist's rendering showing how Saskatchewan Polytechnic's new campus might look when complete.

- ✓ Project partners include Sask Polytech, the Ministries of Advanced Education and SBP, University of Saskatchewan and Innovation Saskatchewan.
- ✓ Work planned for 2025-26 includes land preparation and procurement for the first facility of the new campus.
- ✓ A Design-Build procurement for a new Skilled Trades and Technology Building was released and is anticipated to be complete in late 2025.
- ✓ Site preparation for the new building is anticipated to be complete in spring 2025.

Government Services

SBP supports the delivery and procurement of capital projects in the government services sector, which includes correctional, judicial, parks and water infrastructure. SBP works collaboratively with the Ministries of Corrections, Policing and Public Safety, Justice and Attorney General, Parks, Culture and Sport and Water Security Agency to deliver these projects. Projects include:

Saskatchewan Public Safety Agency Airtanker Fleet

The Saskatchewan Public Safety Agency (SPSA) will be acquiring four re-purposed land-based airtanker aircraft, consisting of two Dash 8-Q400AT models and two Dash 8-Q400MRE models at an approximate total cost of \$187 million.

The planes will replace the current fleet of land-based airtanker aircraft, which will reach the end of their useful lifespan in 2027. Saskatchewan relies on land-based airtanker aircraft as part of its approach to managing wildfires. These aircraft are used in instances where waterbombers may not be able to access lakes to fill up their tanks.

The Dash 8-Q400AT planes are dedicated air tankers, while the Dash 8-Q400MRE models can be fitted as an airtanker and reconfigured to provide multiple roles for air operations (e.g., air evacuations, patient transport, cargo hauling, etc.). Both models have increased capacity and efficiency and produce 30 per cent less emissions than a similar sized airtanker.

These planes will replace the SPSA's aging land-based airtanker fleet with a modern, supportable aircraft with an anticipated useful life of 25 years. They will also support the SPSA's ability to provide an operational response to more emergencies and public safety events beyond wildfires.

- ✓ The first of the four airplanes is expected to arrive in late May 2025, with the remaining arriving by the end of 2027.

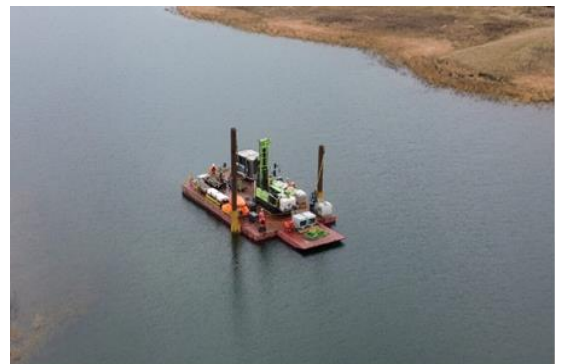
Lake Diefenbaker Irrigation Projects

Current Stage: Planning

Delivery Model: To Be Confirmed

One of the initiatives within the *Saskatchewan Growth Plan* is to expand irrigation in the province. The Government of Saskatchewan is moving forward with the 90,000-acre Westside Irrigation and Rehabilitation Project.

- ✓ The planning, design and engagement with stakeholders and Indigenous rights holders is underway.
- ✓ Geotechnical and agricultural soil investigations have been completed.



Geotechnical investigations showing a barge drilling borehole in Lake Diefenbaker.

Provincial Parks

The Government of Saskatchewan continues to increase investment in provincial parks to improve infrastructure and create additional diverse recreation opportunities, which directly support the *Growth Plan* goal of building a better quality of life for Saskatchewan families.

In 2025-26, \$12.5M will be invested in capital projects throughout the parks system to improve visitor experience, including completion of a new service centre at Nut Point Campground in Lac La Ronge Provincial Park, as well as new backcountry camping sites at Moose Mountain Provincial Park, and improvements and upgrades at Narrow Hills, Makwa Lake, Buffalo Pound, Greenwater Lake and Danielson Provincial Parks.

The Government of Saskatchewan invested \$13.3M in provincial parks capital in 2024-25, which supported the completion of approximately 50 small to medium scale capital projects.

With these investments, a total of over \$217M has been invested in capital investments and preventative maintenance in provincial parks since 2007.



A back country shelter built in Moose Mountain Provincial Park.



Drone footage of the new trailer sewage dump which will be located at Narrow Hills Provincial Park.