

Intelligence and Situational Awareness Unit

Event: Situation Update

Location: Saskatchewan

Current as of: June 25, 2025

Information

Please note that the information provided is current at the time of writing and may be subject to change.

Further information is located on the [SPSA Interactive Wildfire Map](#).

For more information regarding wildfire weather and smoke, please visit [FireSmoke Canada](#).

Highway Hotline, please visit [Sk Highway Hotline](#)

Current Active Fires: 19 (as of 11:00 hrs)

Notes

Not Contained

5

Contained

2

Ongoing Assessment

9

Protecting Property

3

Wildfires of Note

25LF – SHOE (Lower Fishing Lake)

Fire Reported Date

May 7, 2025

Current Size

554,484.0 ha. (as of 11:00 hrs)

Status

Not Contained

Resources

Type 1 Crew Members, Type 2 Crews, Type 3 Crews, Helicopter Support, Air Tanker Support, Out of Province Support

Communities < 20km

Lower Fishing Lakes, Caribou Creek, Piprell Lake, East Trout Lake, Little Bear Lake/Moose Horn, Whelan Bay/Whiteswan, Choiceland, Garrick, Snowden, Smeaton, Candle Lake

Values in Area

SaskPower Infrastructure, Highways 106, 120, 692, 912, 913, and 927, cabins/lodges in area, Gem Lakes Campground, Narrow Hills Provincial Park, Clarence-Steepbank Lakes Provincial Park, Logging camp, SPSA Fire Base

Weather

Max. Temp: 22C. Min. RH: 45%. Winds: SE 10-20 G 40 km/h. Precipitation: NIL. The surface inversion is expected to break around 09:00 CST Wednesday morning. A surface ridge will, and upper trough will bring partly cloudy skies to the region with a risk of thundershowers or thunderstorms. Between 10-15 mm of rain, winds gusting 70-90 km/h and a risk of large hail is possible in Strong thunderstorms. Another surface inversion will build in the area around midnight.

Evacuations

East Trout Lake

Impacts

Values lost. Closures of HWY's 912 and 927. Closure of Narrow Hills Provincial Park. East Trout-Nipekamew Lakes Recreation Site is closed.

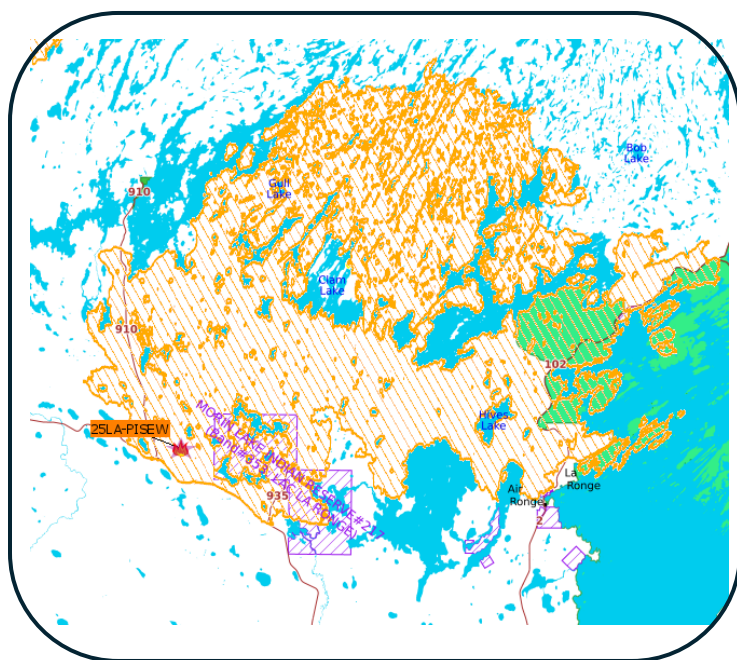
25LF-SHOE (Lower Fishing Lake) continued

The Shoe fire remains at 50% containment and some rain showers occurred on most of the eastern perimeter of the fire June 24. Drone scans were effective south of HWY 120, down to HWY 106 and scans will continue north of HWY 120. Structure Specialist continues to obtain value damage assessments throughout the fire. Division North's crews continued fire gridding for hotspots in Little Bear, Moose Horn and Lake Piprell. Another crew worked the heat along HWY 106 north of Moose Horn. Panhandle Interagency Hotshot Crew (IHC) flew crew members into a value on the south end of Meeyomoot Lake to secure a hotspot just east of that value. The rest of the crew along with Silver City IHC gridded for hotspots identified by the drone scan on the western perimeter. Division South again had their crews spread across the southern end of the fire. A crew flew back in pad 27, gridded and extinguished hotspots. Another crew continued to work the heat and found 11 hotspots around Smallwood Lake extinguishing with pump and hose. Another crew found 11 hotspots and extinguished them on the west side of Kelsey Lake with handtools/chainsaws. The last crews were in the southern section of Harding Road working 10 hotspots utilizing heavy equipment and hand tools.



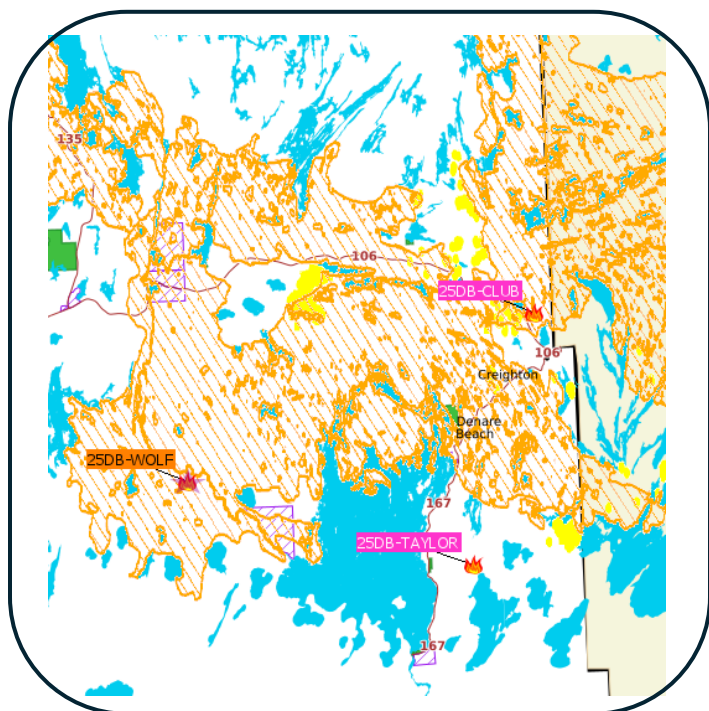
Wildfires of Note	
25LA-PISEW (West of La Ronge)	
Fire Reported Date	May 21, 2025
Current Size	184,897.0 ha. (as of 11:00 hrs)
Status	Not Contained
Resources	Type 1 Crew Members, Type 2 Crews, Type 3 Crews, Helicopter Support, Air Tanker Supports, Heavy Equipment Support, Out of Province Supports
Communities < 20km	Besnard Lake, Hall Lake, Clam Lake, Wadin Bay, Lac La Ronge Indian Band (LLRIB), La Ronge, Air Ronge, Nemeiben Lake, Sucker River, English Bay, Wadin Bay, Sikachu, Eagle Point, Potato Lake, Lamp Lake, Rabbit Creek, Napatak
Values in Area	SaskPower Infrastructure, SaskTel Infrastructure, SaskEnergy Infrastructure, Highways 2, 102, 165, 910, 935 Highways Camp, cabins in area, SPSA Fire Base, La Ronge Airport
Weather	Max. Temp: 24C. Min. RH: 30%. Winds: S-SE 10-20 G 30-40 km/h Precipitation: Trace in showers. The surface inversion is expected to break around 08:30 CST Wednesday morning. A surface ridge and upper trough will bring a mix of sun and cloud to the area and slight chance of showers with a risk of thundershowers in the area. A low-pressure system will approach the province from the west increasing the winds speed in the area during the afternoon. Up to 10mm, winds gusting 70km/h and risk of small hail in thundershowers.
Impacts	Values Lost. Closure of bridge at Clam Crossing (Highway 935), Closure of Lac La Ronge Provincial Park (until June 26). Power and communications outages.

Division A/Z are looking good and crews continue to mop up and patrol. Division J / M crews are performing patrol along the fireline and continue to work hot spots near Clam Lake. Division R crews are working hotspots found on the infra red scans, and will be evaluating staffing of this division. Division V crews are mopping up and cold trailing the fireline. Division Y will be unstaffed June 25 as resources are moved to areas with greater fire activity. Division S is the new division that the Pisew Fire Team assumed command of June 24 at 1200, and the portion of the Shoe Fire that falls within the Northern Repsonse Area. The division is heavily staffed with crews working to locate and assess potential areas for direct line construction. Warmer, drier weather is expected the next couple of days. Pisew Fire is 30% contained.



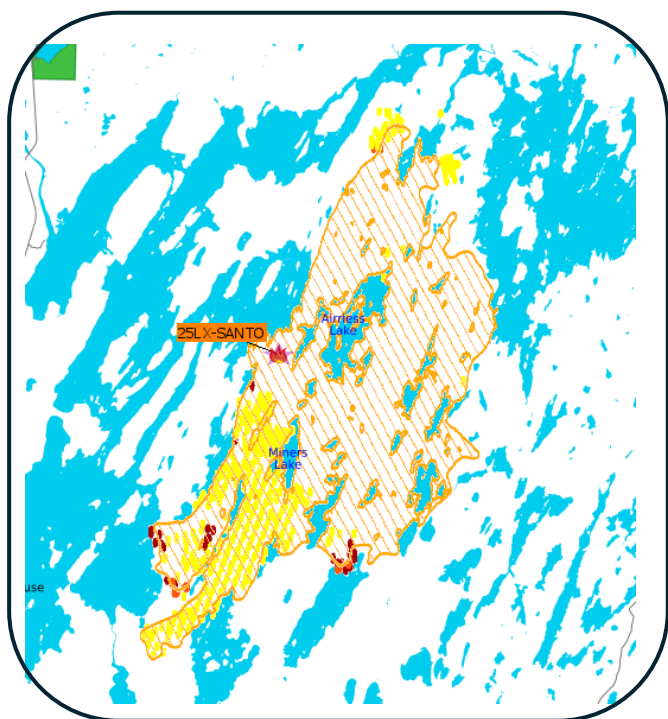
Wildfires of Note	
25DB–WOLF (West of Denare Beach)	
Fire Reported Date	May 6, 2025
Current Size	161,420.0 ha on SK side (as of 11:00 hrs)
Status	Not Contained
Resources	Type 1 Crew Members, Type 2 Crews, Helicopter Support, Air Tanker Support
Communities < 20km	Jan Lake, Denare Beach, Creighton, Flin Flon
Values in Area	McIlveena Mine Site, SaskPower Infrastructure, SaskTel Infrastructure, cabins in area, HWY 135, HWY 106, HWY 167, SPSA Fire Base
Weather	Sunny, temp 23C, RH 30%, winds SE 10- 20 G40. Up to 10 mm, winds gusting 70 km/h and a risk of small hail in thundershowers.
Evacuations	Creighton P1's and P2's, Denare Beach P1's and P2's, (remainder of DB P3 residents repatriating June 25), Flin Flon repatriating June 25
Impacts	Closure of HWY 167, values lost in Denare Beach.

Crews will continue work around Foran Mine, off the West Arm road, along HWY 106 near Nesootao, and demobilize values protection on the Sturgeon Weir River and Beaverdam Lake. The fire will continue to be assessed and areas of concern determined.



Wildfires of Note	
25LX–SANTO (east of Pinehouse, northwest of La Ronge)	
Fire Reported Date	June 2, 2025
Current Size	19,473.0 ha (as of 11:00 hrs)
Status	Not contained
Resources	Type 1 Crew Members, Type 2 Crews, Type 3 Crews, Helicopter Support, Air Tanker Support
Communities < 20km	Pinehouse
Values in Area	Highway 914, Highway 910, SaskPower Infrastructure
Weather	Sunny, temp 23C, RH 30%, winds SE 10- 20 G40. Up to 10 mm, winds gusting 70 km/h and a risk of small hail in thundershowers.

Parts of the west flank have burnt to the eastern edge of Pinehouse Lake. The area of concern for June 25 is across from the Cotter Lake Camp. Helicopter pad was built and crews will be inserted into this area the morning of June 25.



Wildfires of Notes	
25WY-DITCH02 (North of Weyakwin)	
Fire Reported Date	May 26, 2025
Current Size	182,741.0 ha. (as of 11:00 hrs)
Status	Not Contained
Resources	Type 1 Crew, Type 2 Crews, Type 3 Crews, Helicopter Support, Air Tanker Support, Heavy Equipment, Out of Province Support
Communities < 20 km	Weyakwin, Molanosa, Ramsey Bay, Timber Bay
Values in Area	SaskPower Infrastructure, SaskTel Infrastructure, SaskEnergy Infrastructure, HWY 2, HWY 165, HWY 969
Weather	Increasing cloud, temp 24C, RH 40%, winds SE 10- 20 G40. Trace amounts in rain showers. Up to 15-20 mm, winds gusting 80 km/h, and a risk of large hail in strong or severe thunderstorms.

East Division: Crews will be flown in and out of the cut block area. Crews will utilize pumps and hose as well as helicopter support when needed. West division: Crews and equipment on the south end of the west division will drive and hike to their work areas and utilize heavy equipment where access permits, and helicopter support where needed. Crews in the middle part of the west division will be flown in and out and will utilize helicopters for bucket support. Crews on the northwest side of the fire will drive in and use both helicopters and pumps and hose to work on the scattered heat.



Current Evacuations (as of 11:00 hrs)		
Community	Number	Supported by
East Trout Lake	2	SPSA ECS
Denare Beach	P1's and P2's, (remainder of Denare Beach P3 residents repatriating June 25)	SPSA ECS
Creighton	P1's and P2's	SPSA ECS
Cumberland House	Priority 1 and 2 Individuals- repatriated June 22.	Community Support

SPSA ECS – Saskatchewan Public Safety Agency, Emergency Crisis Support