

Intelligence and Situational Awareness Unit

Event: Situation Update

Location: Saskatchewan

Current as of: June 12, 2025, 11:00 hrs

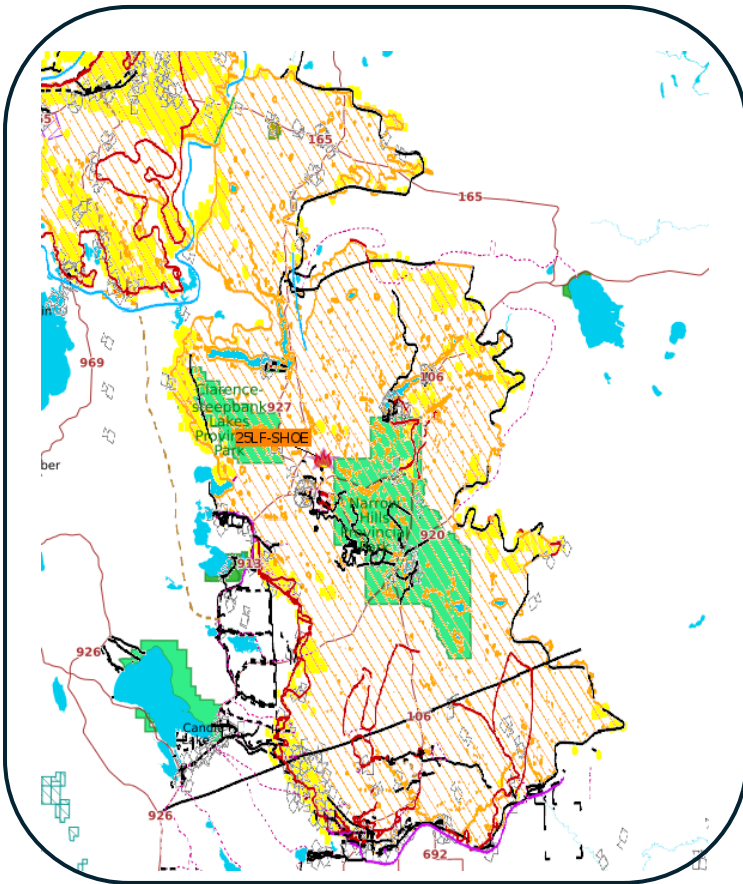
Information	
Please note that the information provided is current at the time of writing and may be subject to change.	
Further information is located on the SPSA Interactive Wildfire Map .	For more information regarding wildfire weather and smoke, please visit FireSmoke Canada .
Highway Hotline, please visit Sk Highway Hotline	

Current Active Fires: 23 (as of 11:00hrs)		Notes
Not Contained	6	
Contained	3	
Ongoing Assessment	12	
Protecting Property	2	

Wildfires of Notes	
25LF – SHOE (Lower Fishing Lake)	
Fire Reported Date	May 7, 2025
Current Size	550,663.0 ha. (as of 11:00 hrs)
Status	Not Contained
Resources	Type 1 Crew Members, Type 2 Crews, Heavy Equipment Support, Helicopter Support, Air Tanker Support, Delta Wildfire Irrigation Values Protection Specialists, Out of Province Support
Communities < 20km	Lower Fishing Lakes, Caribou Creek, Piprell Lake, East Trout Lake, Little Bear Lake/Moosehorn, Whelan Bay/Whiteswan, Choiceland, Garrick, Snowden, Smeaton, Candle Lake
Values in Area	SaskPower Infrastructure, Highways 106, 120, 692, 912 and 913, cabins/lodges in area, Gem Lakes Campground, Narrow Hills Provincial Park, Clarence-Steepbank Lakes Provincial Park, Logging camp, SPSA Fire Base
Weather	Max Temp: 20C Min RH: 40% Winds: E 5-15 G 30 km/h Precipitation: NIL.
Evacuations	Piprell Lake (repatriated June 11), Little Bear Lake/Moosehorn (repatriated June 11), Lower Fishing Lake, East Trout Lake, Whiteswan/Whelan Bay, voluntary evacuation Candle Lake
Impacts	Values lost. Closures of HWY's 912 and 913. Intermittent closures of HWY 106, 120. Closure of Narrow Hills Provincial Park. East Trout-Nipekamew Lakes Recreation Site is closed.

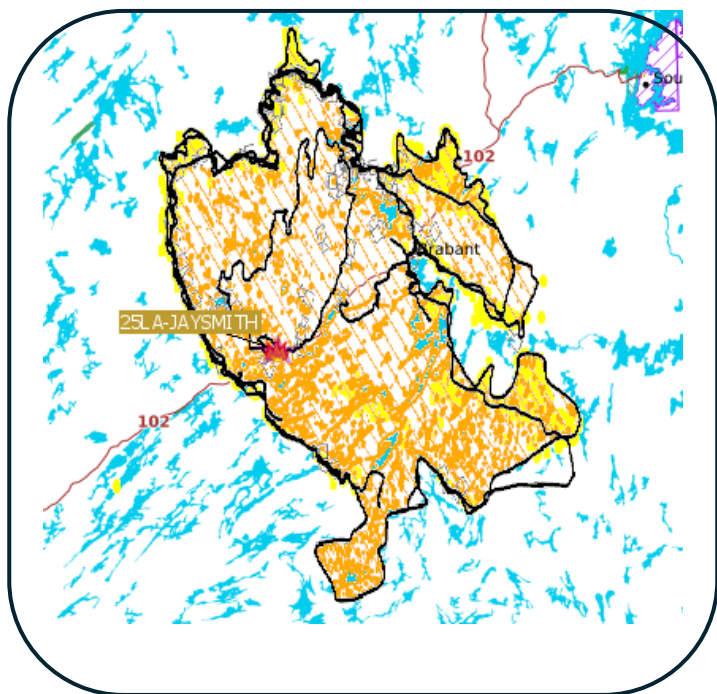
25LF-SHOE (Lower Fishing Lake) continued

North Division: Mop up of hotspots North of Whelan Bay continued. Mop up around Little Bear/Moosehorn continues with the help of heavy equipment and overnight drone scan. Direct attack with heavy equipment completed as far as possible. South division: Crews continue with direct attack on the west flank, to the south of the Torch river. Mop up of 106 slop over continues. Crews worked east of the 106 towards the Torch River on the east flank June 11. All operations supported by buckets throughout the day. Increased fire behaviour observed this afternoon warranted tanker action on the West flank in both North and South Divisions. Drone scan completed for Whelan Bay and 106 slopover the evening of June 11.



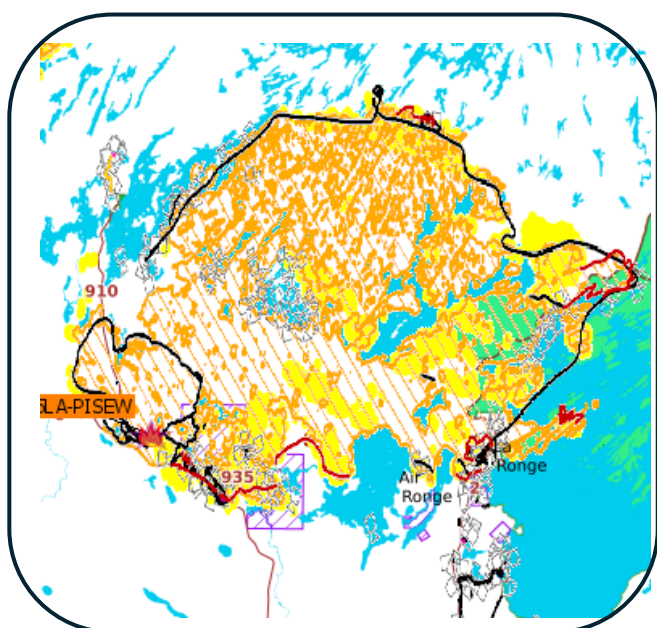
Wildfires of Notes	
25LA-JAYSMITH (Northeast of Missinipe)	
Fire Reported Date	May 20, 2025
Current Size	165,328.0 ha. (as of 11:00 hrs)
Status	Protecting Values
Resources	Type 1 Crew Members, Helicopter Support, Air Tanker Support, contracted float planes
Communities < 20 km	Brabant
Values in Area	SaskPower Infrastructure, Highway 102, cabins /lodge in area, Kimos Golden Mine Site (Not staffed).
Weather	Mix of sun and cloud. Temp 17C, RH 35%. Winds L/V, E-SE 5-15 at times, trace in showers.
Evacuations	Brabant (repatriating June 12)
Impacts	Values lost. Intermittent closure of HWY 102 from McLennan Lake to JCT 905.

The fire received rain June 11. Crews are patrolling along the northeast flank for hotspots, and new helicopter pads will be constructed in areas where there is fire activity. Values protection units (VPU's) will be demobilized where not needed. Favorable conditions with good visibility.



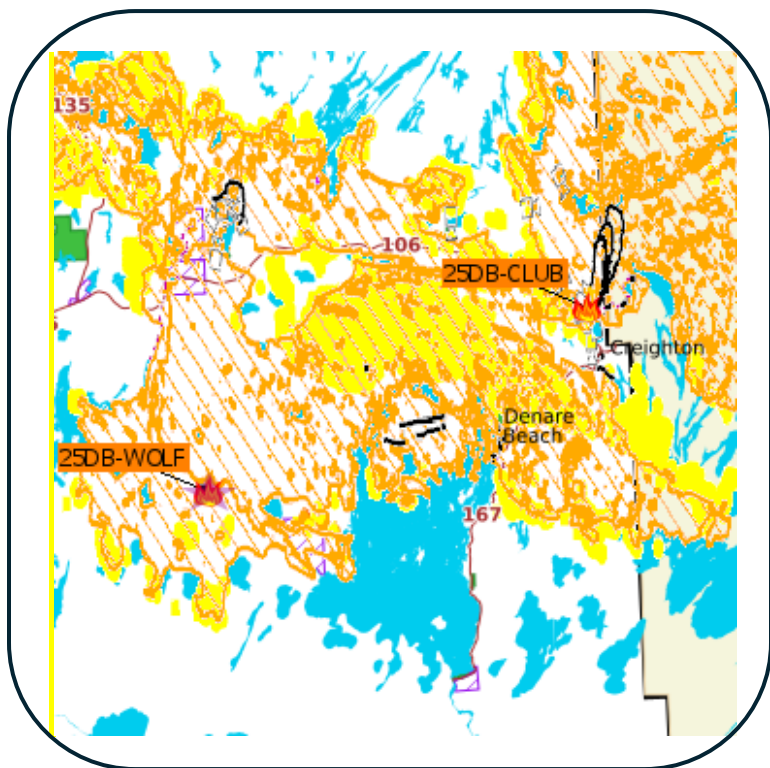
Wildfires of Notes	
25LA-PISEW (West of La Ronge)	
Fire Reported Date	May 21, 2025
Current Size	181,765.0 ha. (as of 11:00 hrs)
Status	Not Contained
Resources	Type 1 Crew Members, Type 2 Crews, Type 3 Crews, Helicopter Support, Air Tanker Support, SPSA Compliance and Investigations, Heavy Equipment Support, Out of Province Supports, Local Fire Departments, Gel Systems Canada
Communities < 20km	Besnard Lake, Hall Lake, Clam Lake, Wadin Bay, Lac La Ronge Indian Band (LLRIB), La Ronge, Air Ronge, Nemeiben Lake, Sucker River, English Bay, Wadin Bay, Sikachu, Eagle Point, Potato Lake, Lamp Lake, Rabbit Creek, Napatak
Values in Area	SaskPower Infrastructure, SaskTel Infrastructure, SaskEnergy Infrastructure, Highways 2, 102, 165, 910, 935 Highways Camp, cabins in area, SPSA Fire Base, La Ronge Airport
Weather	Max Temp: 16C. Min RH: 50%. Winds: E-NE 10-20 G 25km/h. Precipitation: Nil. A low in Alberta and a surface ridge to the north brings increasing cloud coverage to the region overnight with light winds. A weak surface inversion may begin to develop by 21:00 CST. Slight chance of a land breeze developing overnight.
Evacuations	Hall Lake, Nemeiben Lake, Sucker River, English Bay, Wadin Bay, Sikachu, Clam Lake, La Ronge, Air Ronge, LLRIB, Eagle Point, Potato Lake, Lamp Lake, Rabbit Creek, Napatak, Stanley Mission Priority 1 and 2- (all to repatriate June 12)
Impacts	Intermittent closures of HWY 165 and HWY 102. Values Lost. Closure of bridge at Clam Crossing (Highway 935), Closure of Lac La Ronge Provincial Park (until June 26). Power and communications outages, no flight services at La Ronge Airport

Heavy equipment continued to work near Napatak. Direct attack continues west of the community of La Ronge and near Napatak. Crews are working hotspots and utilizing helicopters with bucket support to extinguish line. The Northeast section of the fire will continue to be accessed with helicopter pads cut where crews can be mobilized. Demobilization of VPU's where not needed and equipment retrieval from completed areas is ongoing. Starting June 12th, the fire will be sectioned into Divisions R, AZ, JM, and V. Only North Battleford and La Ronge structural departments remain assigned to the fire as others have been released.



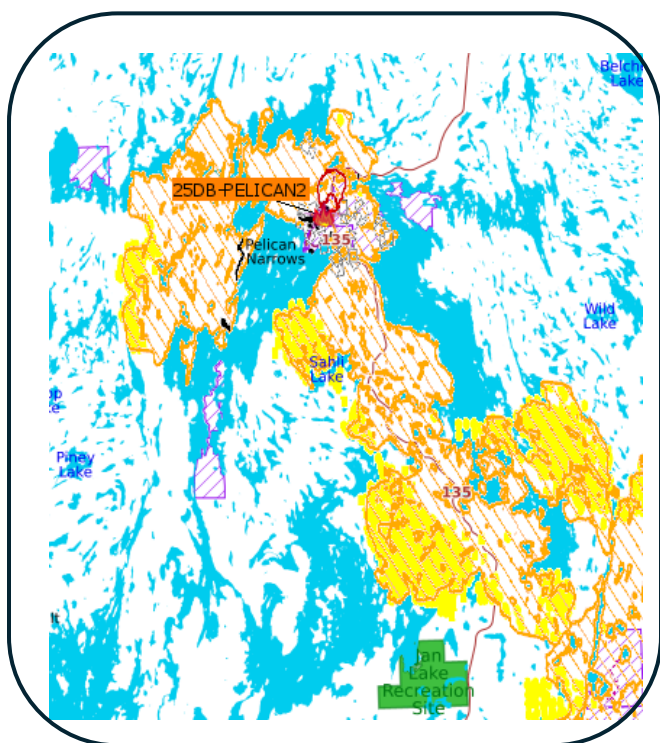
Wildfires of Notes	
25DB – WOLF (West of Denare Beach)	
Fire Reported Date	May 6, 2025
Current Size	130,822.0 ha on SK side, full fire (SK and MB) 135,490.0 ha. (as of 11:00 hrs)
Status	Not Contained
Resources	Type 1 Crew Members, Type 2 Crews, Helicopter Support, Air Tanker Support, SPSA Compliance and Investigations, Local Fire Departments, Global Fire
Communities < 20km	Jan Lake, Denare Beach, Creighton, Flin Flon
Values in Area	McIlveena Mine Site, SaskPower Infrastructure, SaskTel Infrastructure, cabins in area, HWY 135, HWY 106, HWY 167, SPSA Fire Base
Weather	Mix of sun and cloud, temp 18C, RH 40%. Winds E-SE 5-15, L/V at times. Trace in showers.
Evacuations	Jan Lake (repatriating June 12), Denare Beach, Creighton, Flin Flon,
Impacts	Closure of HWY 106 JCT 135 to Creighton, closure of HWY 167, values lost in Denare Beach, power and communications outages.

Crews will continue to work out spots radiating out from community as well as along the HWY 106's and 167. Crews are also working the unsecured area to the north of Denare Beach. Type 2 crews are working in an area just adjacent to Denare Beach Reserve. Overhead continues to inventory values burnt from the Wolf and Club Fires.



Wildfires of Notes	
25DB – PELICAN2 (Northeast of Pelican Narrows)	
Fire Reported Date	May 25, 2025
Current Size	40,580.0 ha. (as of 11:00 hrs)
Status	Not Contained
Resources	Type 1 Crew Members, Type 2 Crews, Helicopter Support, Air Tanker Support, Local Fire Department, Heavy Equipment Support
Communities < 20km	Pelican Narrows, Jan Lake
Values in Area	Construction camp, SaskPower Infrastructure, SaskTel Infrastructure, Highway 135, PPSTN Communication Tower, SPSA Fire Base
Weather	Mix of sun and cloud, temp 18C, RH 40%. Winds E-SE 5-15, L/V at times. Trace in showers.
Evacuations	Pelican Narrows (repatriated June 11), Deschambault Lake Priority 1 and 2 individuals (repatriated June 11), construction camp.
Impacts	Values lost, power and communications outages, intermittent closure of HWY 135

Crews continue to extinguish hot spots on the south of the fire near Jan Lake where helipads have been created. Crews are demobilizing equipment where it is no longer required as lines as secure. VPU's are still in place in Jan Lake. Crews will continue to monitor the community of Pelican Narrows and HWY 135 from the narrows to Jan Lake Junction.



Wildfires of Notes	
25WY-DITCH02 (North of Weyakwin)	
Fire Reported Date	May 26, 2025
Current Size	174,000.0 ha. (as of 11:00 hrs)
Status	Not Contained
Resources	Type 1 Crew Members, Type 2 Crews, Helicopter Support, Air Tanker Support, Heavy Equipment, Local Fire Departments, Out of Province Support
Communities < 20 km	Weyakwin, Molanosa, Ramsey Bay, Timber Bay
Values in Area	SaskPower Infrastructure, SaskTel Infrastructure, SaskEnergy Infrastructure, HWY 2, HWY 165, HWY 969
Weather	Partly cloudy, temp 23C, RH 30%. Winds E 10-20 G 30.
Evacuations	Northern Hamlet of Timber Bay (repatriated June 11), Molanosa (repatriated June 11), Resort Subdivision of Ramsey Bay (repatriating June 13)
Impacts	Intermittent closure of HWY 2, HWY 165, HWY 969

West Division: Will continue line construction to the north utilizing dozers. Will be prepared to conduct ignition operations south of Ramsey Road to Montreal Lake. North Division: Will continue to scout and construct direct and indirect line from HWY 2 to HWY 165 along the fires edge. East Division: Will continue to extinguish and heat and crews will begin opening up HWY 969 to Molanosa.



Current Evacuations (as of 11:00 hrs)		
Community	Number	Supported by
Piprell Lake	4- repatriated June 11	2 supported by SPSA ECS
Narrow Hills Provincial Park	3	No supports required
East Trout Lake	2	SPSA ECS
Little Bear Lake/Moosehorn	2- repatriated June 11	SPSA ECS
Hall Lake	380- repatriating June 12	CRC
Brabant Lake	32- repatriating June 12	SPSA ECS
Lower Fishing Lake	280	No supports required
Pelican Narrows	Priority 1 and 2 Individuals- Repatriated June 11	CRC
Resort Village of Whelan Bay	12	SPSA ECS
Sturgeon Weir	No permanent residents	No supports required
Deschambault Lake	Priority 1 and 2 individuals- Repatriated June 11	CRC
Creighton/Denare Beach	101	SPSA ECS
Resort Subdivision of Ramsey Bay	Repatriating June 13	No supports required
Jan Lake	Repatriating June 12	SPSA ECS
Northern Hamlet of Timber Bay	108- repatriated June 11	SPSA ECS, Community Support
Molanosa	20- repatriated June 11	Community Support
Nemeiben Lake	repatriating June 12	SPSA ECS
Sucker River	31- repatriating June 12	SPSA ECS
Wadin Bay	repatriating June 12	SPSA ECS
English Bay	repatriating June 12	SPSA ECS
Sikachu	repatriating June 12	CRC
Clam Crossing	repatriating June 12	CRC
Lac La Ronge Indian Band	repatriating June 12	CRC
La Ronge & Air Ronge	1,772- repatriating June 12	SPSA ECS
La Ronge Provincial Park	-	No supports required.
Napatak	repatriating June 12	SPSA ECS
Eagle Point	repatriating June 12	SPSA ECS
Lamp Lake	repatriating June 12	SPSA ECS
Rabbit Creek	repatriating June 12	SPSA ECS
Potato Lake	repatriating June 12	SPSA ECS
Stanley Mission	Priority 1 and 2 Individuals- Repatriating June 12	CRC
Cumberland House	Priority 1 and 2 Individuals	Community Support

SPSA ECS – Saskatchewan Public Safety Agency, Emergency Crisis Support

CRC – Canadian Red Cross