

# Intelligence and Situational Awareness Unit

**Event: Situation Update**

**Location: Saskatchewan**

**Current as of: July 09, 2025**

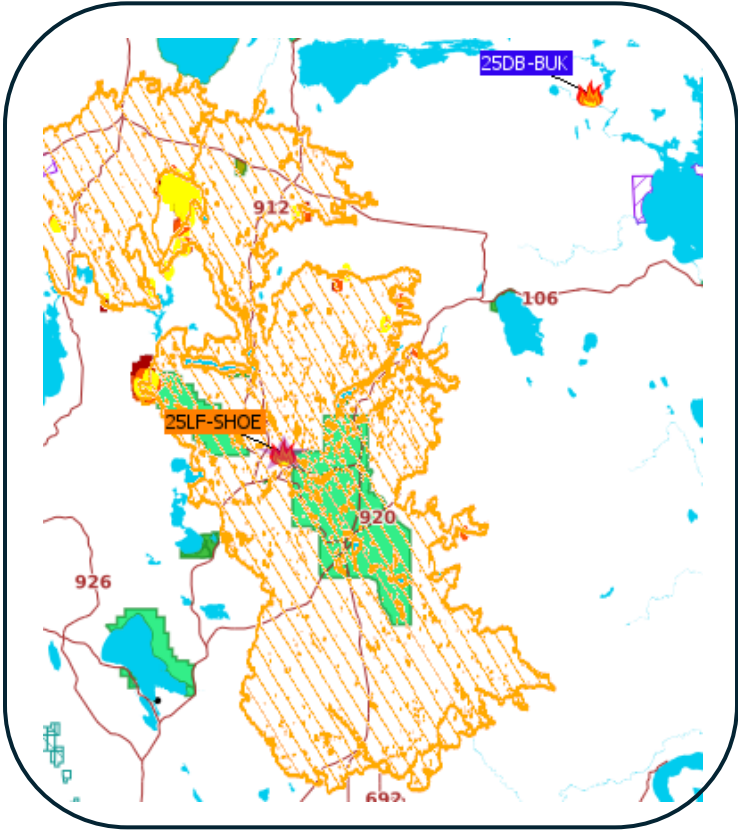
Information	
Please note that the information provided is current at the time of writing and may be subject to change.	
<b>Further information is located on the</b> <a href="#">SPSA Interactive Wildfire Map.</a>	<b>For more information regarding wildfire weather and smoke, please visit</b> <a href="#">FireSmoke Canada.</a>
<b>Highway Hotline, please visit</b> <a href="#">Sk Highway Hotline</a>	

Current Active Fires: 65 (as of 11:00 hrs)		Notes
Not Contained	13	
Contained	7	
Ongoing Assessment	29	
Protecting Property	16	

Wildfires of Note	
25LF – SHOE (Lower Fishing Lake)	
Fire Reported Date	May 7, 2025
Current Size	555,359.0 ha. (as of 11:00 hrs)
Status	Not Contained
Resources	Type 1 Crew Members, Type 2 Crews, Type 3 Crews. Helicopter Support, Air Tanker Support, Out of Province Support, Infrared Drone Scanning Unit.
Communities < 20km	Lower Fishing Lakes, Caribou Creek, Piprell Lake, East Trout Lake, Little Bear Lake/Moose Horn, Whelan Bay/Whiteswan, Choiceland, Garrick, Snowden, Smeaton, Candle Lake
Values in Area	SaskPower Infrastructure, Highways 106, 120, 692, 912, 913, and 927, cabins/lodges in area, Gem Lakes Campground, Narrow Hills Provincial Park, Clarence-Steepbank Lakes Provincial Park, Logging camp, SPSA Fire Base
Weather	Mix of sun and cloud, temp 32C, RH 22%, winds east of cold front: SW: 5-15 G35, west of cold front: NW 15-25 G45. Trace amounts in rain showers. Up to 15 mm, winds gusting 90 km/h and a risk of large hail in strong or severe thunderstorms.
Impacts	Values lost. Closure of HWY 912. Closure of Narrow Hills Provincial Park. East Trout-Nipekamew Lakes Recreation Site is closed.

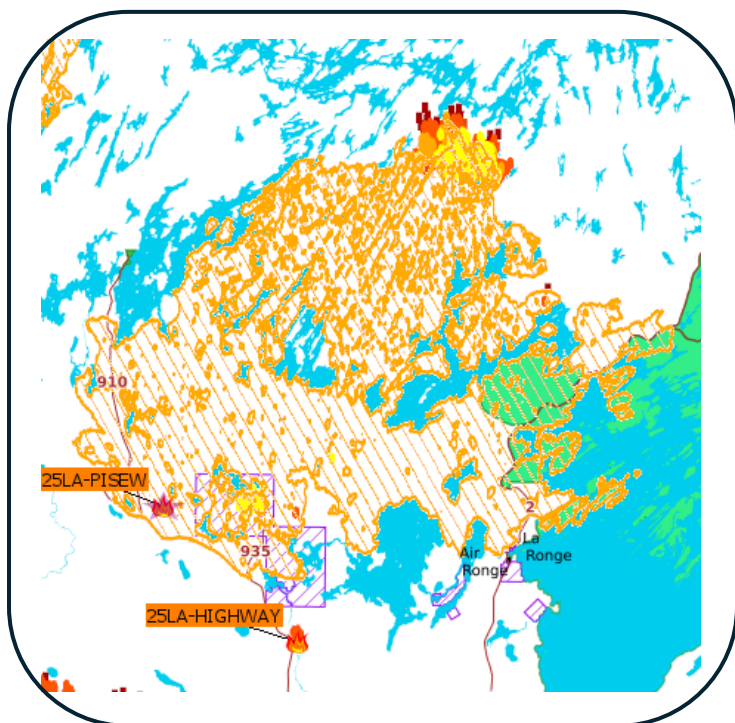
Priorities are being re-assessed and crews will continue to suppress growth where possible assisted by heavy equipment and bucket support, preventing the excursion near Clarence/Steepbank from going south. Efforts will also be focused in Div B near the SaskTel communications tower near the highway.

25LF-SHOE (Lower Fishing Lake) continued



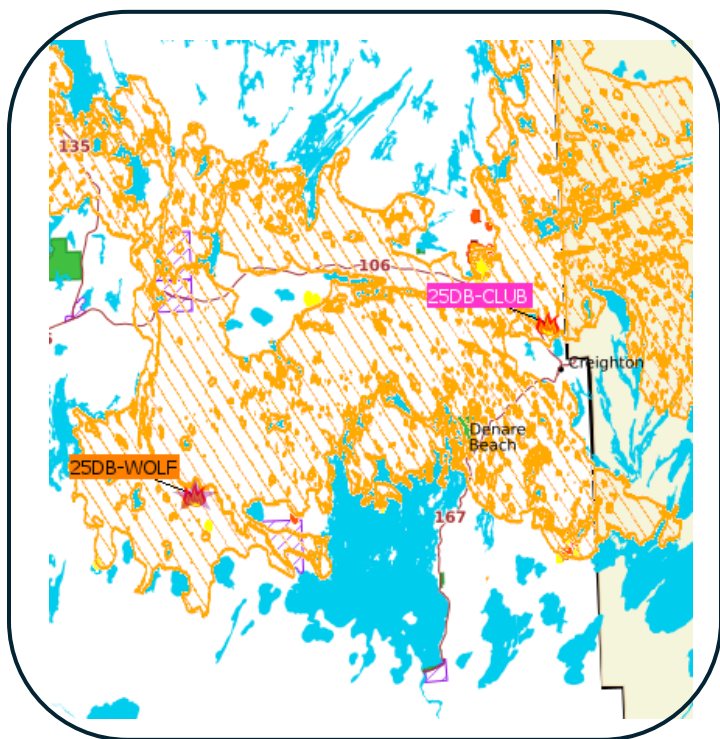
Wildfires of Note	
25LA-PISEW (West of La Ronge)	
Fire Reported Date	May 21, 2025
Current Size	187,700.0 ha. (as of 11:00 hrs)
Status	Not Contained
Resources	Type 1 Crew Members, Type 2 Crews, Type 3 Crews, Helicopter Support, Air Tanker Supports, Heavy Equipment Support, Out of Province Supports
Communities < 20km	Besnard Lake, Hall Lake, Clam Lake, Wadin Bay, Lac La Ronge Indian Band (LLRIB), La Ronge, Air Ronge, Nemeiben Lake, Sucker River, English Bay, Wadin Bay, Sikachu, Eagle Point, Potato Lake, Lamp Lake, Rabbit Creek, Napatak
Values in Area	SaskPower Infrastructure, SaskTel Infrastructure, SaskEnergy Infrastructure, Highways 2, 102, 165, 910, 935, 915 Highways Camp, cabins in area, SPSA Fire Base, La Ronge Airport
Weather	Max Temp: 28 C. Min RH: 21 %. Winds: W-NW 15-30 G 40-45 km/h. Precipitation: Nil to trace. A cold front moving through the area between 09:00-12:00CST will bring cloudy skies, increased wind speeds and a risk of thundershowers and slight chance of showers. Up to 5mm of rain and winds gusting 80 km/h with a risk of hail and dry lightning is possible in thundershowers. The cold front is expected to be fairly dry which will increase the likelihood of reaching crossover conditions.
Impacts	Values Lost. Closure of bridge at Clam Crossing (Highway 935).

Heavy equipment will work along HWY 165 west to re-enforce natural boundaries and prepare to catch the Hawk Fire should it reach that location. DIV A will be monitored with no work planned for the day. DIV B: Build new pads around perimeter and do forward progression on the boundary at quiet spots. DIV C and F crews will continue working on the boundary and along HWY 165 east. DIV D: crew will work along a hot spot close to the La Ronge fire base. DIV E: Patrol perimeter between helipads 20 and 17, extinguishing hot spots up to a hundred feet inside the fire line. Air Tanker request for DIV B July 9 morning.



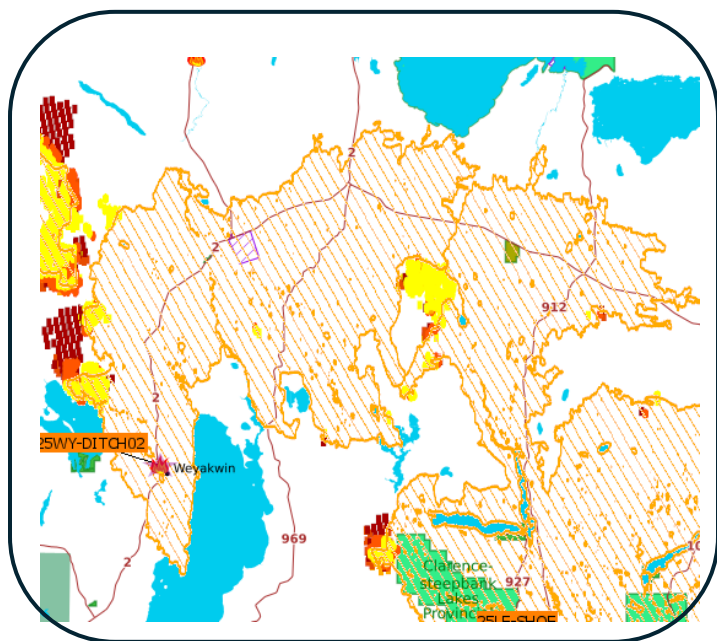
Wildfires of Note	
25DB–WOLF (West of Denare Beach)	
Fire Reported Date	May 6, 2025
Current Size	159,473.0 ha on SK side (161,144.0 ha total, as of 11:00 hrs)
Status	Not Contained
Resources	Type 1 Crew Members, Type 2 Crews, Type 3 Crews, Helicopter Support, Air Tanker Support
Communities < 20km	Jan Lake, Denare Beach, Creighton, Flin Flon
Values in Area	McIlveena Mine Site, SaskPower Infrastructure, SaskTel Infrastructure, cabins in area, HWY 135, HWY 106, HWY 167, SPSA Fire Base
Weather	Clearing skies, temp 33C, RH 17%, winds W-SW 15-25 G45. Less than 3 mm in rain showers. Up to 15 mm, winds gusting 90 km/h and a risk of large hail in strong or severe thunderstorms.
Evacuations	Some Denare Beach residents remain supported out of the community
Impacts	Values lost in Denare Beach.

Crews will extinguish with pump and hose at helipads south of Beatty Lake, and helipad 12. Dozers will access the fire via the West Arm Road to begin constructing line from the road towards helipad 12, installing safety zones/ helipads where appropriate.



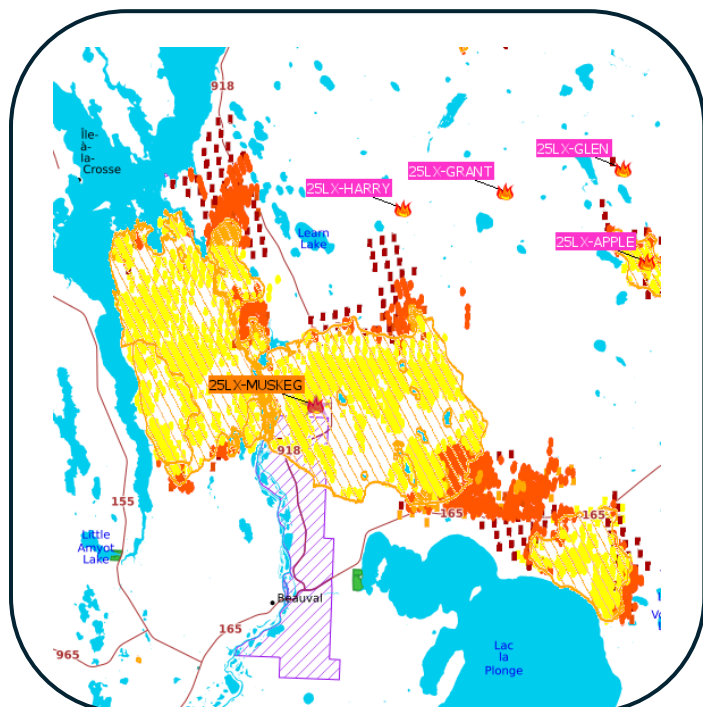
Wildfires of Notes	
25WY-DITCH02 (North of Weyakwin)	
Fire Reported Date	May 26, 2025
Current Size	183,850.0 ha. (as of 11:00 hrs)
Status	Not Contained
Resources	Type 1 Crew, Type 2 Crews, Type 3 Crews, Helicopter Support, Air Tanker Support, Heavy Equipment, Out of Province Support
Communities < 20 km	Weyakwin, Molanosa, Ramsey Bay, Timber Bay
Values in Area	SaskPower Infrastructure, SaskTel Infrastructure, SaskEnergy Infrastructure, HWY 2, HWY 165, HWY 969
Weather	Mix of sun and cloud, temp 32C, RH 22%, winds east of cold front: SW: 5-15 G35, west of cold front: NW 15-25 G45. Trace amounts in rain showers. Up to 15 mm, winds gusting 90 km/h and a risk of large hail in strong or severe thunderstorms.

Crews continue to work along the fire perimeter, patrolling for and extinguishing hot spots. Crews will be supported by heavy equipment. Another contingency line may be constructed south of the one built yesterday near the Rock Lake / Lynx Lake Road JCT. Ramsey Bay, Molanosa, and limiting northern spread remain top priorities. Heavy smoke from the Hawk Fire and west flank of the Ditch Fire combined with west winds may cause poor visibility affecting the ability to put crews in the northern flank of the fire at this time.



Wildfires of Notes	
25LX-MUSKEG (North of La Plonge Indian Reserve & Beauval)	
Fire Reported Date	June 28, 2025
Current Size	33,967.0 ha. (as of 11:00 hrs)
Status	Not Contained
Resources	Type 1 Crew Members, Type 2 Crews, Type 3 Crews, Helicopter Support, Air Tanker Support, Heavy Equipment, Delta Irrigation Specialists, Local Fire Departments.
Communities less that 20km	Ile a La Plonge Indian Reserve, Ile-A-La-Crosse, Beauval, English River First Nation
Values in Area	Highway 918, SaskPower infrastructure, Highway 165
Weather	Max Temp: 27C. Min RH: 18%. Winds: NW 15-30 G45-50 km/h > W 15-25 G 35-40. Precipitation: trace in any showers before 09:00CST. The cold front passing through the region prior to 09:00CST will continue to bring cloudy skies and windy conditions. The cold front is also expected to be fairly dry which will increase the likelihood of reaching crossover conditions.
Evacuations	Resort Subdivision of Lac La Plonge, Northern Village of Beauval
Impacts	Closure of Highway 918 and Highway 165 from JCT 155 to JCT 914

Group A will work from HWY 918 to Beaver Road, securing and mopping up line using pump, hose, hand tools and gel. Group B will construct contingency line from Biec Road, working eastwards towards Lac La Plonge. Group C will work from HWY 165 northwards, with a crew working spot fires in the areas where cat lines have been constructed. Group D will have a changeover in helicopter today and receive a briefing. Group F will assist the structure defense group to prevent loss to property. Pumps and sprinkler set ups will be serviced as needed.



Current Evacuations (as of 11:00 hrs)		
Community	Number	Supported by
Resort Subdivision of Lac La Plonge	5	Friends/Family
Northern Village of Beauval	~600	SPSA ECS, friends/family
Kinoosao	26	CRC (Peter Ballantyne Cree Nation)
La Plonge Reserve	Unknown #'s	Meadow Lake Tribal Council

SPSA ECS – Saskatchewan Public Safety Agency, Emergency Crisis Support

CRC- Canadian Red Cross