

# Intelligence and Situational Awareness Unit

Event: Situation Update

Location: Saskatchewan

Current as of: July 03, 2025

## Information

Please note that the information provided is current at the time of writing and may be subject to change.

Further information is located on the [SPSA Interactive Wildfire Map](#).

For more information regarding wildfire weather and smoke, please visit [FireSmoke Canada](#).

Highway Hotline, please visit [Sk Highway Hotline](#)

## Current Active Fires: 64 (as of 10:30 hrs)

### Notes

Not Contained	20
Contained	8
Ongoing Assessment	25
Protecting Property	11

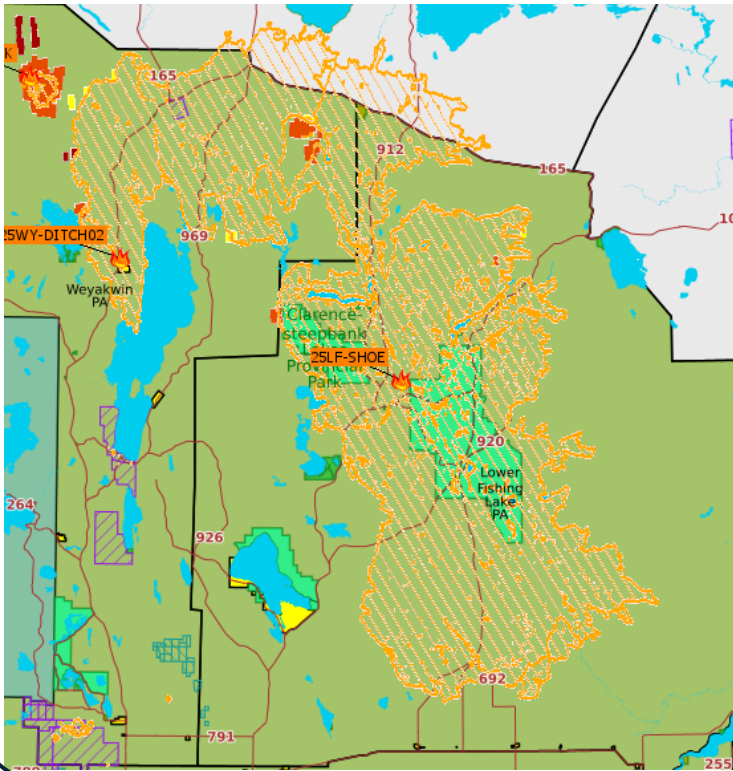
## Wildfires of Note

### 25LF – SHOE (Lower Fishing Lake)

Fire Reported Date	May 7, 2025
Current Size	554,484.0 ha. (as of 10:30 hrs)
Status	Not Contained
Resources	Type 1 Crew Members, Type 2 Crews, Type 3 Crews. Helicopter Support, Air Tanker Support, Out of Province Support, Infrared Drone Scanning Unit.
Communities < 20km	Lower Fishing Lakes, Caribou Creek, Piprell Lake, East Trout Lake, Little Bear Lake/Moose Horn, Whelan Bay/Whiteswan, Choiceland, Garrick, Snowden, Smeaton, Candle Lake
Values in Area	SaskPower Infrastructure, Highways 106, 120, 692, 912, 913, and 927, cabins/lodges in area, Gem Lakes Campground, Narrow Hills Provincial Park, Clarence-Steepbank Lakes Provincial Park, Logging camp, SPSA Fire Base
Weather	Mix of sun and cloud. Max. Temp: 31C. Min. RH: 35%. Winds: SW 15-25 gusting 45km/h. Precipitation: Less than 4mm in rain showers with up to 15mm, winds gusting 90km/h, and a risk of large hail in strong or severe storms.
Evacuations	East Trout Lake
Impacts	Values lost. Closure of HWY 912. Closure of Narrow Hills Provincial Park. East Trout-Nipekamew Lakes Recreation Site is closed.

## 25LF-SHOE (Lower Fishing Lake) continued

Crews will be working South Flank, putting out scanned areas showing heat, extinguishing everything working west to east and pulling out any unused fire equipment. Aerial observation will occur on the southwest flank, pin pointing any unutilized equipment for demobilization and to reuse in different areas. Crews will continue working the northeast flank along pads 44,46, and demobing 48. Hottest areas were north of pad 46 and will continue to relocate equipment for new hot areas.



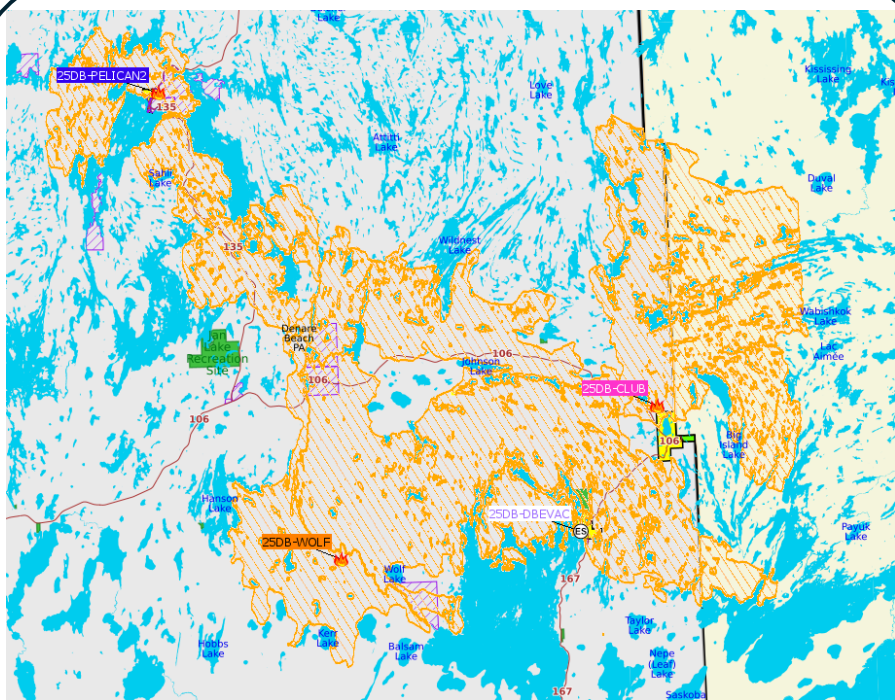
Wildfires of Note	
25LA-PISEW (West of La Ronge)	
Fire Reported Date	May 21, 2025
Current Size	187,500.0 ha. (as of 10:30 hrs)
Status	Not Contained
Resources	Type 1 Crew Members, Type 2 Crews, Type 3 Crews, Helicopter Support, Air Tanker Supports, Heavy Equipment Support, Out of Province Supports
Communities < 20km	Besnard Lake, Hall Lake, Clam Lake, Wadin Bay, Lac La Ronge Indian Band (LLRIB), La Ronge, Air Ronge, Nemeiben Lake, Sucker River, English Bay, Wadin Bay, Sikachu, Eagle Point, Potato Lake, Lamp Lake, Rabbit Creek, Napatak
Values in Area	SaskPower Infrastructure, SaskTel Infrastructure, SaskEnergy Infrastructure, Highways 2, 102, 165, 910, 935 Highways Camp, cabins in area, SPSA Fire Base, La Ronge Airport
Weather	Max. Temp: 29C. Min. RH: 35%. Winds: S 10-20 light and variable at times switching to W-NW 15-25 gusting 35-40km/h. Precipitation: Trace in showers with up to 5-10mm , winds gusting 90km/h, a risk of large hail, and very slight risk of a tornado in strong or severe thunderstorms. A low near the region and a cold front from a low to the north moving eastward through the region will bring a mix of sun and cloud, moderate-strong winds, and a risk of strong or severe thunderstorms to the region. The cold front will pass through the region around 12:00-15:00CST.
Impacts	Values Lost. Closure of bridge at Clam Crossing (Highway 935).

Div A: Patrol and mop up areas that threaten values at risk DIV: B/E: Mop up and cold trail fire line to protect value at risk and identify future threaten values; push down every hotspots found with the scan. Div C: Extinguish all hot spots on the perimeter of the north of shoe fire. Div D: Mop up and cold trail fire line to protect values at risk, reassess the need and improve values protection. Extinguish hot spot around La Ronge to protect community.



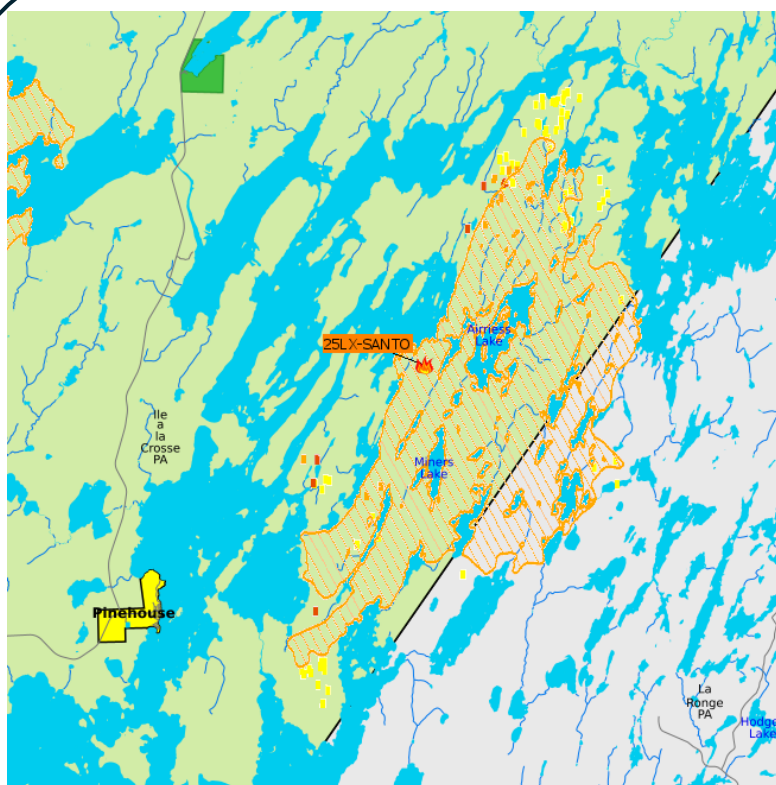
Wildfires of Note	
25DB–WOLF (West of Denare Beach)	
Fire Reported Date	May 6, 2025
Current Size	161,420.0 ha on SK side (as of 10:30 hrs)
Status	Not Contained
Resources	Type 1 Crew Members, Type 2 Crews, Helicopter Support, Air Tanker Support
Communities < 20km	Jan Lake, Denare Beach, Creighton, Flin Flon
Values in Area	McIlveena Mine Site, SaskPower Infrastructure, SaskTel Infrastructure, cabins in area, HWY 135, HWY 106, HWY 167, SPSA Fire Base
Weather	Mix of sun and cloud, Temp 32C, RH 30%. Winds: East of the front S 10-20 gusting 40km/h and West of the front W 15-25 gusting 45km/h. Precipitation: Less than 2mm in rain showers with up to 15mm, winds gusting 90km/h, a risk of large hail, and a risk of a tornado in strong or severe storms.
Evacuations	Some Denare Beach residents remain supported out of the community
Impacts	Closure of HWY 167, values lost in Denare Beach.

Ops Section Chief will assign resources as necessary.



Wildfires of Note	
25LX-SANTO (east of Pinehouse, northwest of La Ronge)	
Fire Reported Date	June 2, 2025
Current Size	20,000.0 ha (as of 10:30 hrs)
Status	Not contained
Resources	Type 1 Crew Members, Type 2 Crews, Type 3 Crews, Helicopter Support, Air Tanker Support
Communities < 20km	Pinehouse
Values in Area	Highway 914, Highway 910, SaskPower Infrastructure
Weather	Mix of sun and cloud, Temp 32C, RH 30%. Winds: East of the front S 10-20 gusting 40km/h and West of the front W 15-25 gusting 45km/h. Precipitation: Less than 2mm in rain showers with up to 15mm, winds gusting 90km/h, a risk of large hail, and a risk of a tornado in strong or severe storms.

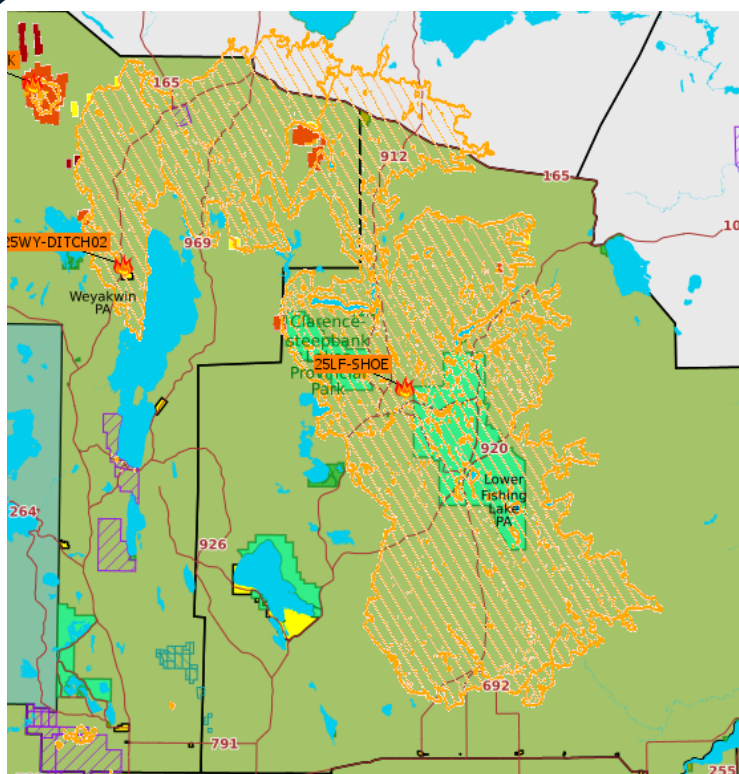
Crews will continue to work on the south eastern portion of the fire finishing up with remaining locations that could continue to run south.





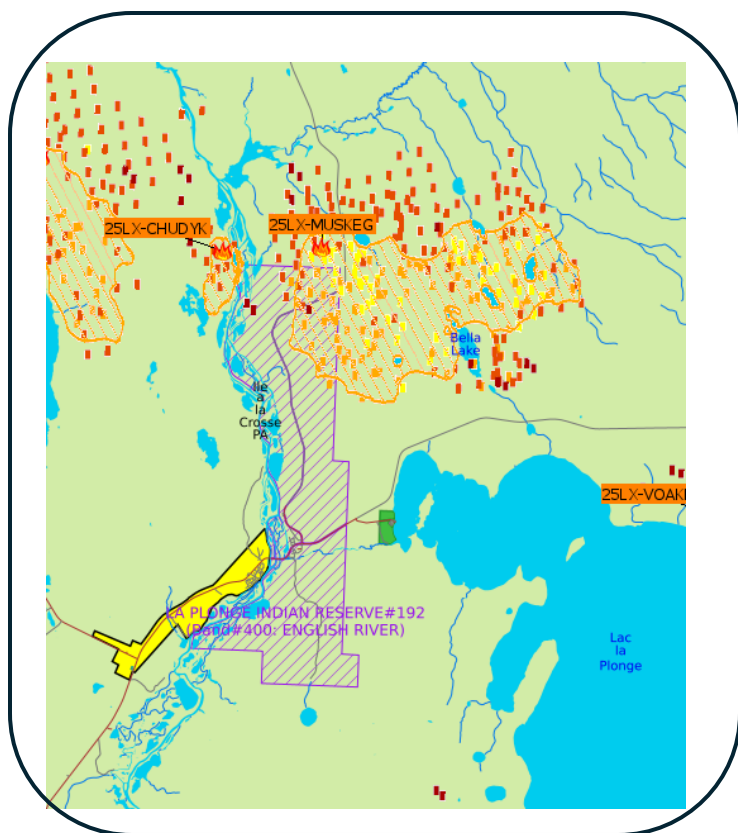
Wildfires of Notes	
25WY-DITCH02 (North of Weyakwin)	
Fire Reported Date	May 26, 2025
Current Size	183,120 ha. (as of 10:30 hrs)
Status	Not Contained
Resources	Type 1 Crew, Type 2 Crews, Type 3 Crews, Helicopter Support, Air Tanker Support, Heavy Equipment, Out of Province Support
Communities < 20 km	Weyakwin, Molanosa, Ramsey Bay, Timber Bay
Values in Area	SaskPower Infrastructure, SaskTel Infrastructure, SaskEnergy Infrastructure, HWY 2, HWY 165, HWY 969
Weather	Mix of sun and cloud. Max. Temp: 31C. Min. RH: 35%. Winds: SW 15-25 gusting 45km/h. Precipitation: Less than 4mm in rain showers with up to 15mm, winds gusting 90km/h, and a risk of large hail in strong or severe storms.

Div West : Crews and dozers will work to contain the excursion northeast of Weyakwin lake using dozer guard, pump and hose, and ignitions. Crews will work south of Weyakwin to contain an area of concern burning in an aspen stand east of hwy 2 utilizing hand tools and water packs. A crew to work North of the 165 junction to Besnard Lake to extinguish hotspots utilizing a bladder and hose line. Night operations commencing to protect the Tracy road. Crews will be monitoring fire spread and maintaining value protection equipment. Helicopter support will be used as required.



Wildfires of Notes	
25LX-MUSKEG (North of La Plonge Indian Reserve & Beauval)	
Fire Reported Date	June 28, 2025
Current Size	8,083 ha. (as of 10:30 hrs)
Status	Not Contained
Resources	Type 1 Crew, Helicopter Support, Air Tanker Support, Heavy Equipment, Delta Irrigation Specialists
Communities less that 20km	La Plonge Indian Reserve, Beauval
Values in Area	Highway 918, SaskPower infrastructure, Highway 165
Weather	Max. Temp: 30C. Min. RH: 23%. Winds: SW 5-20 light and variable at times switching to W 15-30 gusting 40-45km/h. Precipitation: Trace in showers with up to 5-10mm, winds gusting 90km/h, and risk of large hail in strong or severe thunderstorms. An inversion aloft will linger until the front has passed through the region/closer to noon. A weakening low near the region and a cold front from a low to the north moving eastward through the region will bring a mix of sun and cloud, moderate-strong winds, and a risk of strong or severe thunderstorms to the region. The cold front will pass through the region between 09:00-12:00CST.
Evacuations	Resort Subdivision of Lac La Plonge, Northern Village of Beauval voluntary Priorities
Impacts	Closure of Highway 918 and Highway 165

Dozer line work has almost been completed. The remaining wet line for the area south of Beauval will be completed in the morning. A new sprinkler line is being set up from the river to the south along Hwy 165 covering the outskirts of the community of Beauval. Once gel arrives they will cover the industrial area with gel product.



Wildfires of Notes	
25LA-GUNNER (Northwest of Southend)	
Fire Reported Date	June 29, 2025
Current Size	30.0 ha (as of 10:30 hrs)
Status	Protecting Values
Resources	Type 1 crews
Values in Area	Highway 905
Weather	Mix of sun and cloud, Temp 29C, RH 35%. Winds: West W 5-15 gusting 35km/h and East E 5-15 gusting 30km/h. Precipitation: Between 1-7mm of rain with up to 10mm, winds gusting 80km/h, and risk of small hail in thundershowers.
Impacts	Possible compromise to Highway 905

Crews will service value protection units by ground and air.





Current Evacuations (as of 10:30 hrs)		
Community	Number	Supported by
Northern Settlement of Bear Creek	18	SPSA ECS
Resort Subdivision of Lac La Plonge	5	Friends/Family
Northern Village of Beauval	TBD – Voluntary Priorities	SPSA ECS
Kinoosao	9 Priority 1 & 2 residents	CRC (Peter Ballantyne Cree Nation)
La Plonge Reserve	TBD	Meadow Lake Tribal Council

SPSA ECS – Saskatchewan Public Safety Agency, Emergency Crisis Support

CRC- Canadian Red Cross