

COVID-19 Epi Update

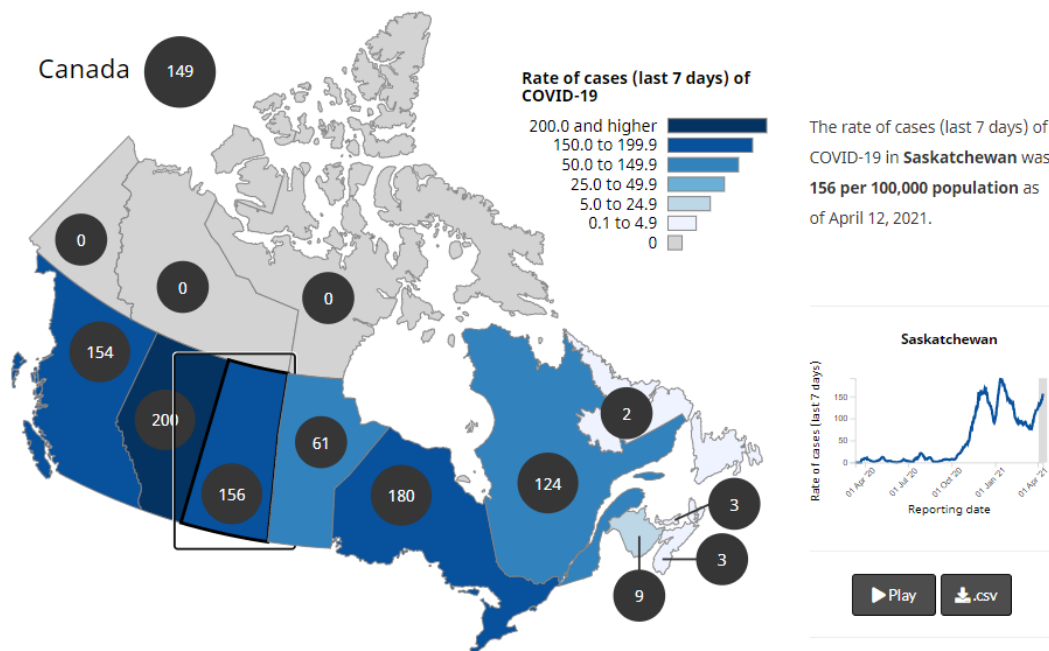
April 13, 2021

Provincial Rate of Cases, as of April 12

Current situation

Figure 1a. of of COVID-19, by as of April 12, 2021

i Hover over or tap provinces and territories to see total cases, active cases, resolved cases, tests performed or deaths in Canada over time. Click the play button to animate the map.



This information is based on data from our provincial and territorial partners. It's current as of April 12, 2021, 7 pm EST. For the most up to date data for any province, territory or city, please visit their web site.

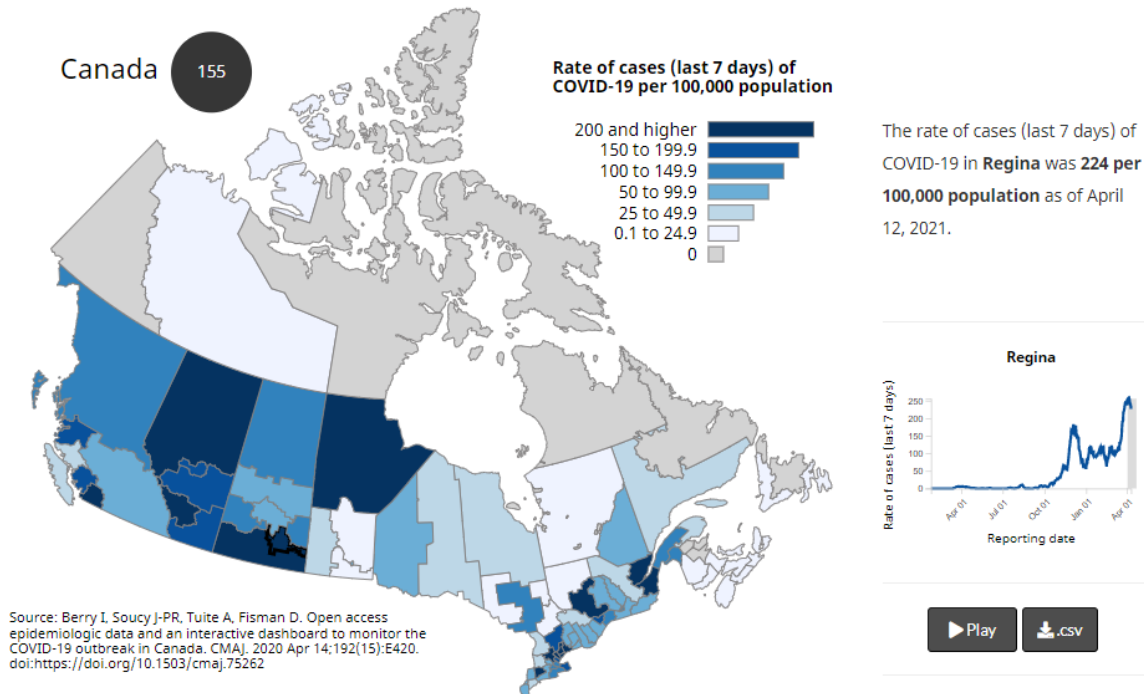
[▶ Figure 1a: Text description](#)

Rate of Cases by Region, as of April 12

Current situation

Figure 1a. of of COVID-19, by as of April 12, 2021

🖱️ Hover over or tap health regions to see total cases, active cases, resolved cases or deaths in Canada over time. Click the play button to animate the map.



This information is based on data from our provincial and territorial partners. It's current as of April 12, 2021, 7 pm EST.

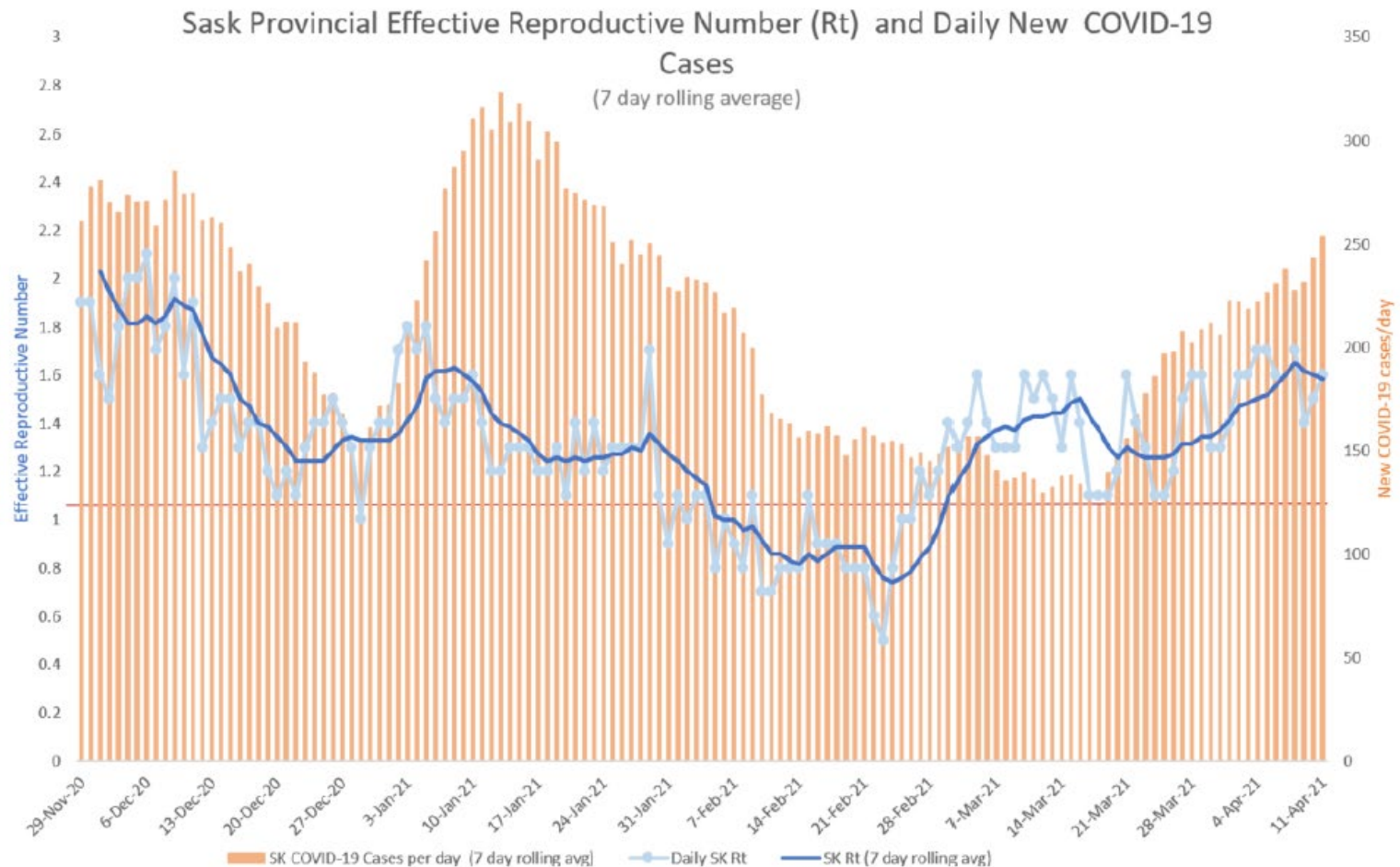
COVID-19 Seven Day Averages

Variance Across Province

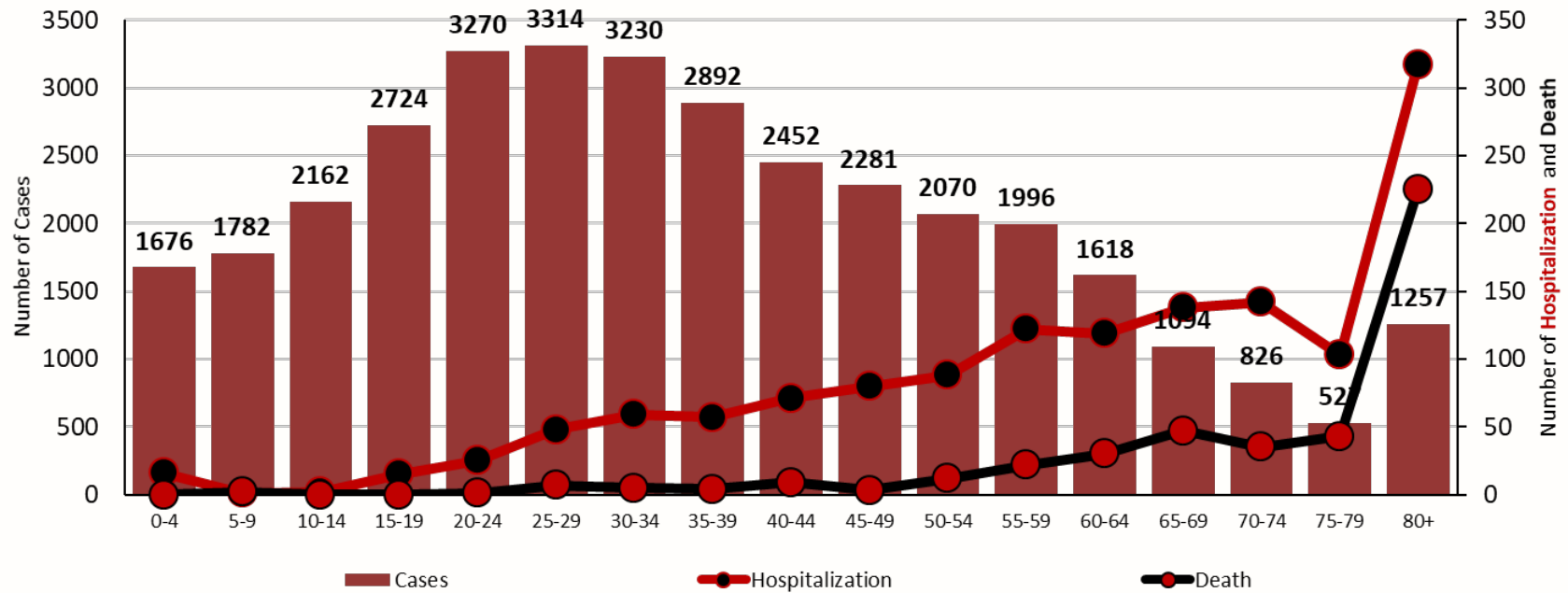
Data as of Apr 13, 2021

	7 day average (Apr 6-12, 2021)							
Zone	New cases	New case rate per 100,000	Active cases	Active case rate per 100,000	Test positivity (%)	Testing rate per 100,000	New VOC cases	% of new cases that are VOC
Far North West	5.0	16.6	34.4	114.2	12.9	140.7	0.7	14.7%
Far North Central	0.1	5.3	0.9	32.0	7.1	85.4	0.0	0.0%
Far North East	1.6	6.4	20.1	82.2	4.5	140.0	0.1	9.1%
North West	17.7	21.0	118.3	140.0	15.2	150.5	3.1	18.0%
North Central	7.3	8.1	59.1	65.5	5.6	130.3	2.1	31.3%
North East	3.7	8.8	51.9	123.1	5.8	147.5	0.3	7.7%
Saskatoon	53.0	15.5	394.9	115.5	7.0	222.7	20.6	39.1%
Central West	4.0	10.6	14.4	38.2	9.9	102.6	3.0	77.8%
Central East	14.7	14.7	121.4	121.4	6.9	212.4	7.9	53.4%
Regina	100.0	36.0	1,038.3	373.5	12.2	300.1	80.4	80.8%
South West	7.7	19.4	37.9	95.3	10.9	175.2	4.0	51.9%
South Central	16.4	26.4	169.7	272.9	9.0	311.7	13.1	80.7%
South East	30.7	33.6	270.6	296.4	9.1	360.6	21.9	71.5%
SK	270.9	22.1	2,373.0	193.7	8.2	272.0	162.4	59.9%

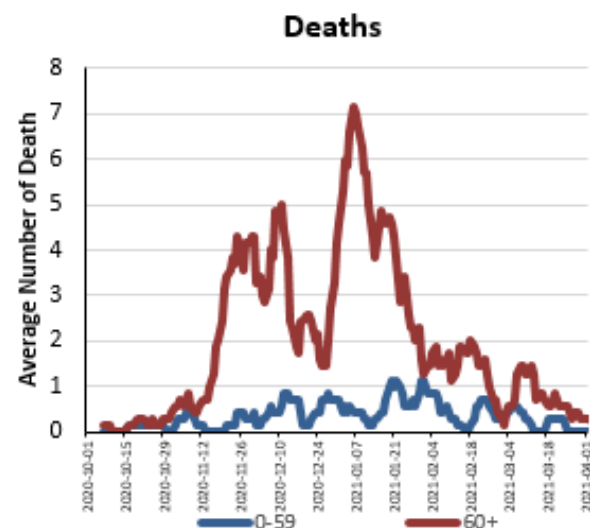
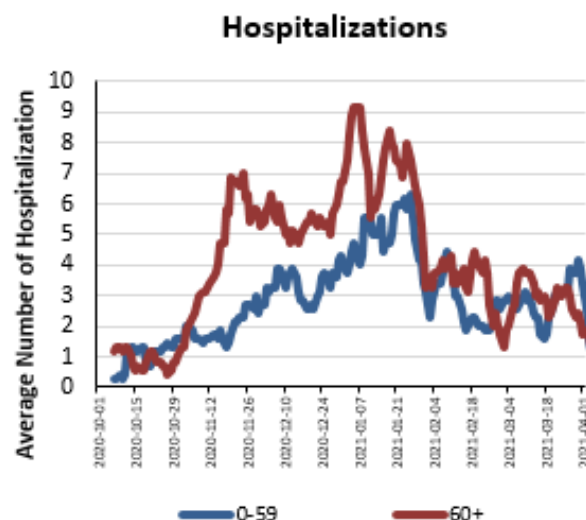
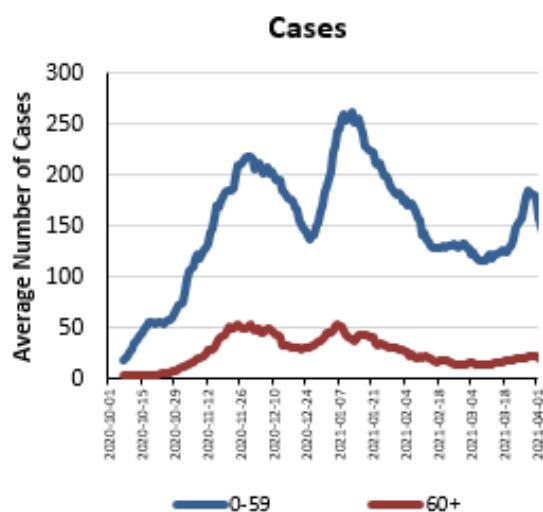
Effective Reproductive Number - Rt trending increasing



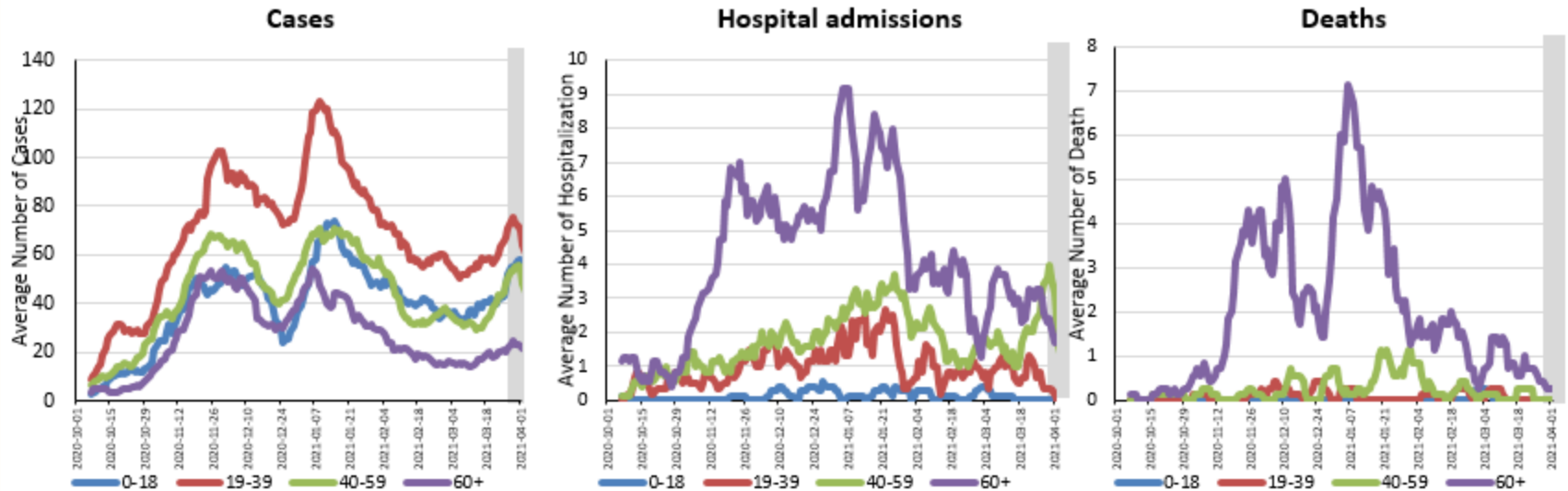
Cases, Hospitalizations and Deaths by Age Group



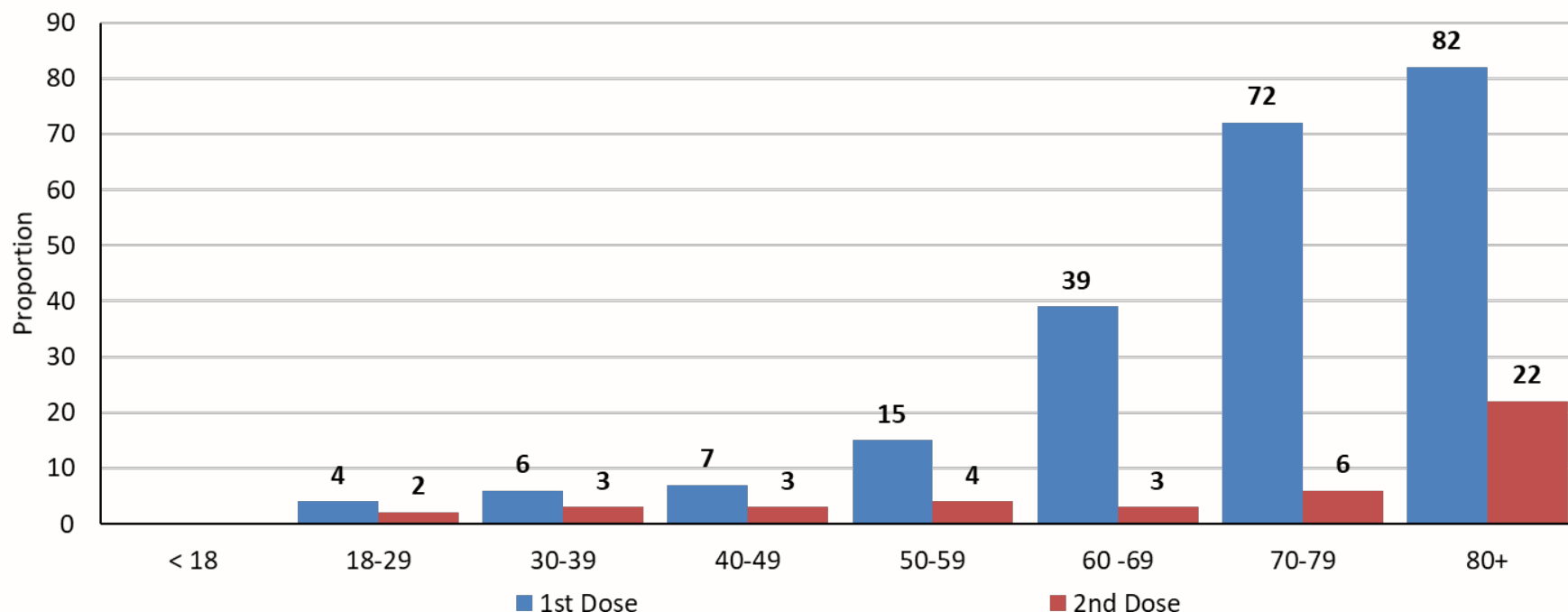
Seven Day Average of Cases, Hospitalizations and Death by Age Group (Oct 2020 to Apr 2021)



Seven Day Average of Number of Cases, Hospital Admissions and Death by Age Group (Oct 2020 to Apr 2021)



Proportion of 18+ with 1st and 2nd Vaccine Doses by Age Group (as of April 8, 2021)



The actions taken by the people of Saskatchewan collectively will determine the outcomes.

Simple measures reduce the risk of infection:

- **Mask whenever you are away from your home**
- **Physically distance**
- **Reduce close contacts and non-essential travel**
- **Outdoors is better than indoors**
- **Washing hand/sanitizing often**
- **Stay home with even the mildest symptoms and get tested**
- **Abide by public health guidelines in every public space**
- **Get the vaccine as soon as you are eligible to receive it**

Public Health Order is available at saskatchewan.ca/COVID19