

Enhanced CT Services

Replacement CT scanners in The Battlefords and Lloydminster

New 160-slice computed tomography (CT) scanners:

- more detailed scans than the 16-slice scanners they are replacing
- allow for more complex scans
- faster scans, with substantial reduction in radiation exposure to patients
- less maintenance downtime than with the previous machines

Regional service began in 2005

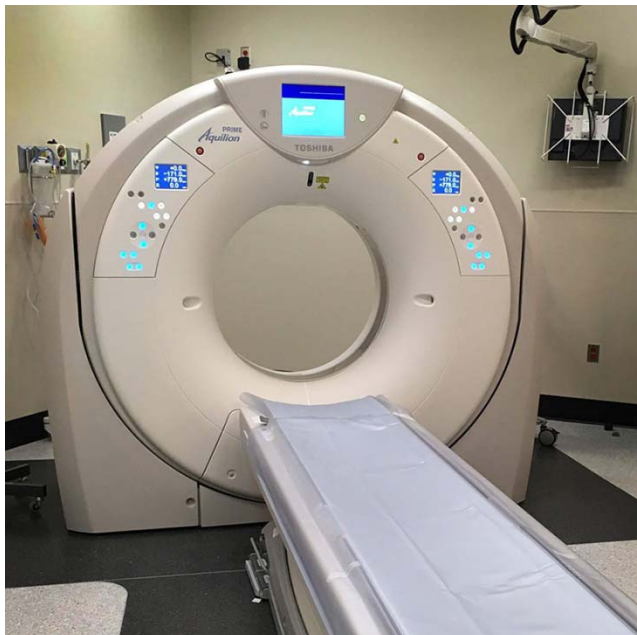
The original unit at Lloydminster Hospital started service in January 2006. The upgrade suite began serving patients on November 6, 2017.

The original CT machine in North Battleford began operating nearly 12 years ago, in October 2005. The upgraded CT suite began serving patients on September 18, 2017.

CT scans in 2016-17

At Lloydminster Hospital:
about 5,700 patients
(half were Saskatchewan residents)

At Battlefords Union Hospital
in North Battleford:
about 5,400 patients



The new CT scanners at Lloydminster Hospital and Battlefords Union Hospital replaced units that had been in service since 2005.

Photo by Prairie North Health Region.

How a CT scanner works

Computed tomography (CT) is an advanced method of using x-rays from multiple angles to view systems or organs in the body, often providing a three-dimensional view.

CT scans are often used to determine the extent of internal injuries after an accident or other trauma. They are commonly used to view very small bones and surrounding tissues such as muscles and blood vessels. Imaging can be used on all parts of the body to help diagnose internal issues. CT scans immediately following a stroke can help to determine the best care options and significantly improve chances of recovery.

CT Services in Saskatchewan

CT scan capacity in Saskatchewan's health system has increased by 48 per cent, from about 75,000 patients in 2007-08 to more than 111,000 patients in 2016-17. During that same period, overall health system spending on medical imaging has increased by 70 per cent to \$143 million.

With the addition of a new CT scanner in 2016 at St. Joseph's Hospital in Estevan, there are now a total of 15 scanners accessible to residents of Saskatchewan:

- Seven permanent units in provincial hospitals (four in Saskatoon, three in Regina);
- Six permanent units in regional hospitals (in Prince Albert, Moose Jaw, Yorkton, Swift Current, North Battleford and Lloydminster);
- One permanent unit in a district hospital (Estevan); and
- One community-based CT scanner in Regina (Radiology Associates of Regina contracted with RQHR to provide 13,000 exams per year).

The government continues to explore opportunities to improve service and reduce wait times.

The Patient Choice Medical Imaging Act allows private pay CT services and extends the benefits realized under the two-for-one provision to CT services as well as MRI. With a referral from a physician, patients can choose to pay for an MRI done by a private licensed supplier. The supplier will provide a scan free-of-charge to someone on the public wait list.

More information:

saskatchewan.ca

In a recent three-month period
(June to August 2017),

9 out of 10

Saskatchewan patients
received their CT scan

within 57 days.