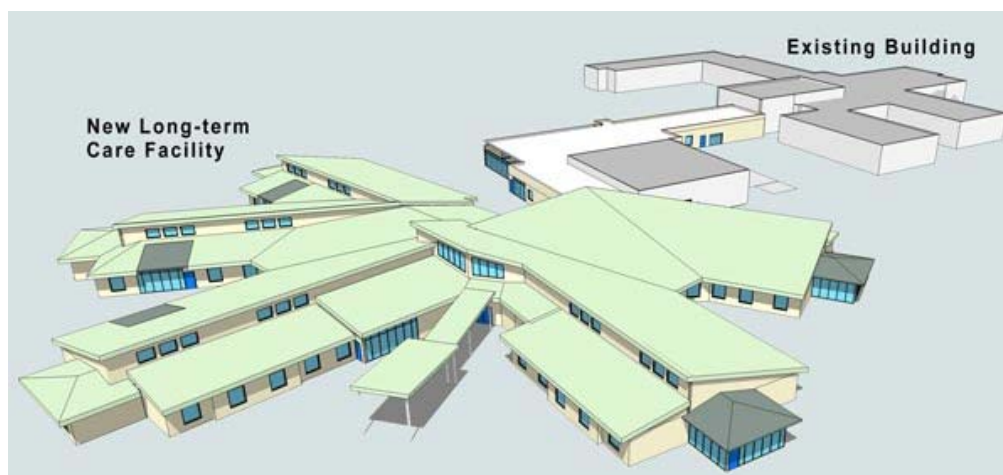


Background Information

Rosetown Long-term Care Facility

When construction is complete, all services from the Wheatbelt Centennial Lodge and the nursing wing of the Rosetown & District Health Centre wing will move to the new long-term care facility, adjacent to the Health Centre.

This long-term care redevelopment project was announced in February 2009, as part of the renewal of 13 outdated long-term care homes in Saskatchewan. Provincial funding is provided under the government's Ready for Growth initiative.



Sketch of the planned long-term care facility.


Long-term Care Facility

- 54 beds
- 4,460 square metres
- All private rooms
- Connected to Rosetown & District Health Centre
- Ceiling-mounted safety lifts
- Hydrasound tubs for improved circulation and safety
- Modern amenities
- Upgraded nurse call system
- Fenced courtyard
- Improved adult day program
- Enables greater health provider teamwork
- Replaces 28-bed Wheatbelt Centennial Lodge, built in 1967, and 21 long-term care beds in the Health Centre

Donations

The Rosetown and District Health Centre Foundation

New Funding Formula for Health Capital Projects (as of February 2011)

Provincial Government 	80%	Increased from 65%
Local Communities	20%	Reduced from 35%
Construction & Planning Total	100%	