

## **BACKGROUNDER UPDATE**

Note: The chart below shows the initial provincial target of 680 Registered Nurses and Registered Psychiatric Nurse positions, with each health region allocated a specific target to achieve. The remaining 120 positions to achieve the total goal of 800 will be allocated at a future date.

### Provincial and Regional Targets

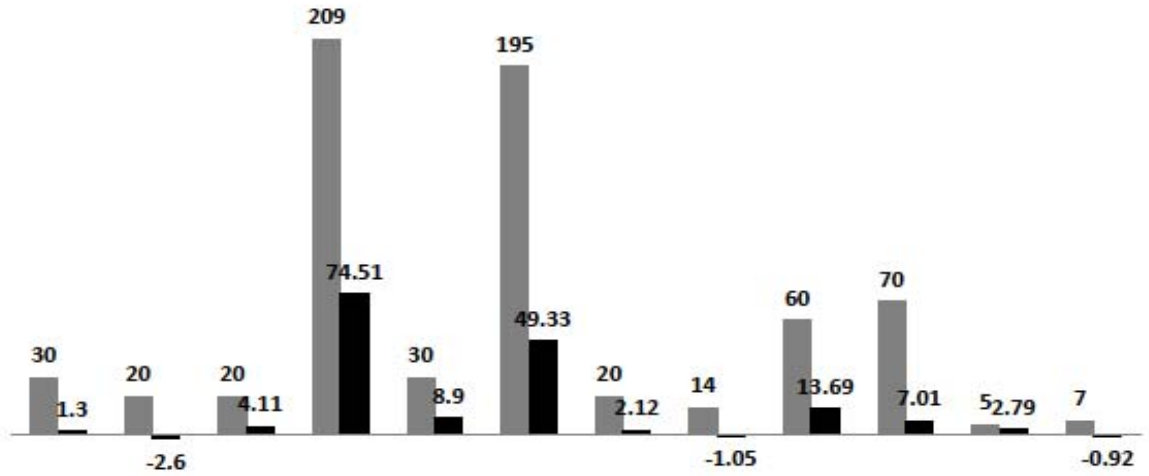
<b>RHA</b>	<b>Initial Regional Targets</b>
SUN Country	30
Five Hills	20
Cypress	20
Regina Qu'Appelle	209
Sunrise	30
Saskatoon	195
Heartland	20
Kelsey Trail	14
Prince Albert Parkland	60
Prairie North	70
Mamawetan Churchill River	5
Keewatin Yatthe	7
<b>TOTAL</b>	<b>680</b>
<b>FUTURE ALLOCATION</b>	<b>120</b>

The Chart "Health Region Retention/Recruitment Progress 2008-2009" below shows the actual gains in the number of Registered Nurses and Registered Psychiatric Nurses employed by each health region, compared to their initial target, for the period March 31/08 to February 28/09. (The term FTE refers to full time equivalent positions, permitting accurate counting of part-time positions).

Health regions that have increased the number of FTEs (full time equivalents) have been compensated and supported by increased baseline funding from the Ministry.

# Health Region Retention/Recruitment Progress 2008-2009

■ Initial FTE Target    ■ Gain or Loss in FTE



	Sun Country	Five Hills	Cypress	RQHR	Sunrise	Saskatoon	Heartland	Kelsey Trail	PA Parkland	Prairie North	Mamawetan	Keewatin
■ Initial FTE Target	30	20	20	209	30	195	20	14	60	70	5	7
■ Gain or Loss in FTE	1.3	-2.6	4.11	74.51	8.9	49.33	2.12	-1.05	13.69	7.01	2.79	-0.92