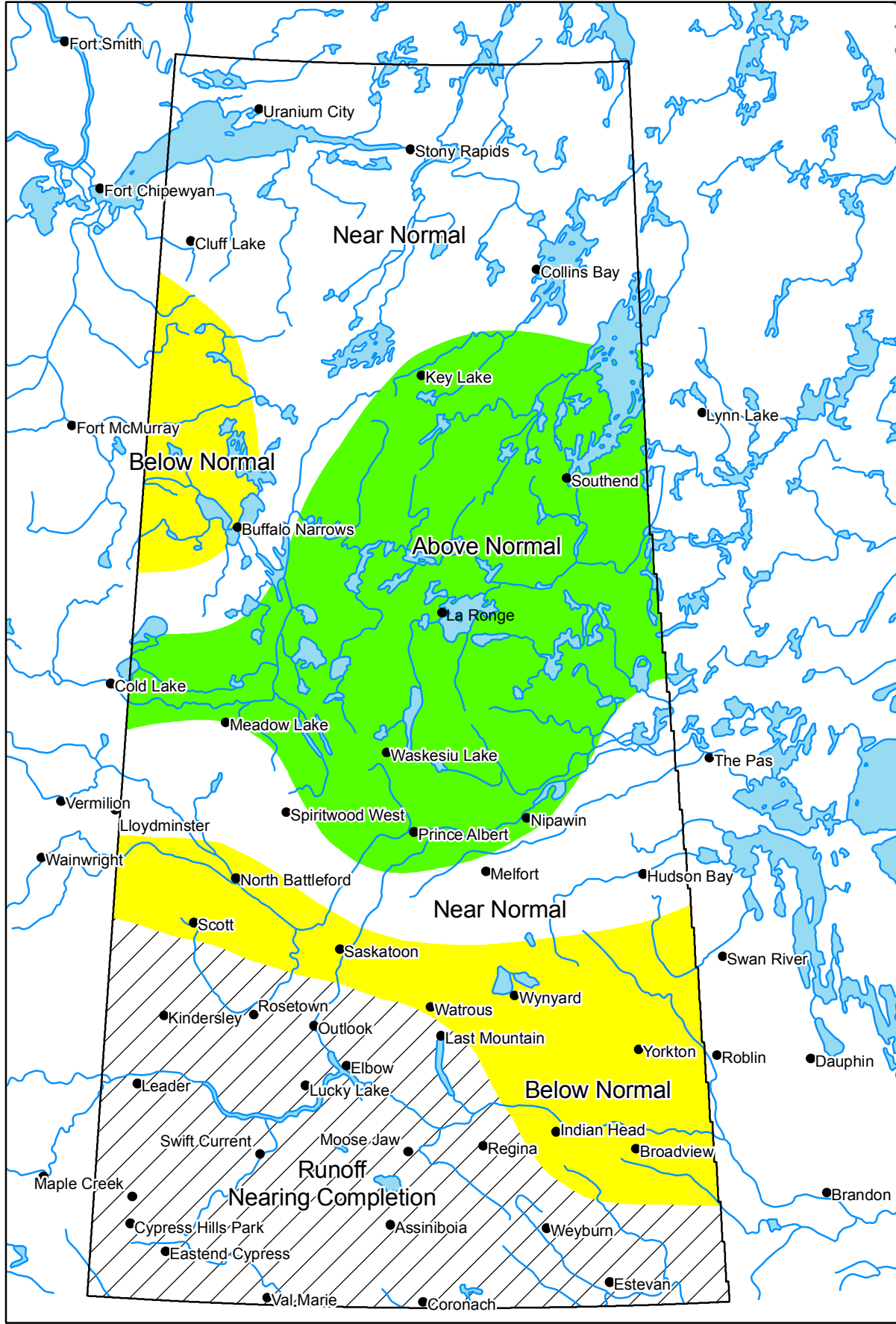


Spring Runoff Potential As Of April 1, 2008



Saskatchewan
Watershed
Authority



Legend

- Potential Runoff**
- Above Normal
 - Below Normal
 - Near Normal
 - Nearing Completion

SWA prepares maps with varying degrees of accuracy and completeness dependant on the circumstances and available data. SWA makes no representation that this map will be sufficient for all uses. The user is advised to confirm the information contained herein in the event that precision and currency of data are required.

Figure 1