



Minister's Order Pursuant to section 35(1) of "The Highways and Transportation Act, 1997"

Pursuant to section 35(1) of "*The Highways and Transportation Act, 1997*" it is hereby ordered that, effective as stated in this Order, **at 12:01 am, Monday March 30, 2026** or where have been stated **effective immediately**. Vehicles other than those exempted in Part II, section 3 (2) and 3 (5) of "*The Vehicle Weight and Dimensions Regulations, 2010*", shall be restricted as follows:

Steering Axle

- 10.0 kg per mm (560 pounds per inch) width of tire (manufacturer's stamped dimension) to a maximum of
- 5,500 kg on the steering axle for a truck or truck tractor equipped with a single steering axle.
- 11,000 kg on the steering axle group for a truck or truck tractor equipped with a tandem axle steering group.

Other Axles

- 6.25 kg per mm (350 pounds per inch) width of tire (manufacturer's stamped dimension) to a maximum of:
- 1,650 kg (3,638 pounds) per tire, or
- 2,630 kg per tire for axles equipped with single tires with a width of 445 mm or greater.

This order does not permit the weight on any axle, axle group or vehicle from exceeding the maximum weight prescribed in the "*The Vehicle Weight and Dimension Regulations, 2010*" for that axle, axle group or vehicle.

The restriction does not apply to:

- Emergency vehicles,
- Ministry of Highways vehicles and municipal maintenance equipment when conducting maintenance or accessing sites on or along the restricted highway,
- SaskPower, SaskEnergy and SaskTel vehicles when accessing sites along the restricted route,
- Recreational vehicles,
- Buses,
- Farm Equipment operated or towed,
- Vehicles directly crossing a Provincial Highway at an intersecting public highway or private road.

Please note that some provincial highways and bridges are subject to special reduced or restricted weights and some are for specific periods of the year, some for precise temperatures. A detailed description of these special restrictions is listed on the last four pages of this Order.

The following Access Roads **will be removed** from Spring Road Restrictions effective immediately upon posting this Order.

No. 1 North urban limits of Pense

The following Rural Municipality **will be removed** from Spring Road Restrictions effective immediately upon posting OF this Order.

No 99 CALEDONIA

The following Provincial Highways will be subject to Spring Road Restrictions at **12:01 am, Monday March 30, 2026.**

- | | |
|--|--|
| No. 5 From Manitoba Border to Jct Hwy 57 | No. 52 From Homefield to Jct Hwy 15 |
| No. 8 From Norquay to 14.6 km. South of Forest Boundary (SPECIAL RESTRICTIONS -8,000kgs from Midnight Mar. 14 to Midnight Nov. 15) | No. 80 From K-1 Mine Access to Churchbridge |
| No. 15 From Jct Hwy 16 to Jct Hwy 9 (SPECIAL RESTRICTION – 8,000kgs) | No. 80 From North town limits of Churchbridge to Jct Hwy 10 (SPECIAL RESTRICTION – 8,000kgs) |
| No. 15 From Jct Hwy 2 to Farrerdale | No. 201 From 500 m North of Jct Hwy 1 to Jct Hwy 247 |
| No. 15 From Farrerdale to Jct Hwy 11 | No. 211 From Jct Hwy 11 to Blackstrap |
| No. 20 From Middle Lake to Jct Hwy 320 | No. 212 From Jct Hwy 11 to Fort Carlton Park |
| No. 20 From 1.6 km North of Pilger to Middle Lake | No. 225 From Jct Hwy 2 to east border of NE-7-44-27-W2 |
| No. 22 From Manitoba Border to South Jct Hwy 8 | No. 225 From Jct Hwy 312 to east border of NE-11-44-28-W2 |
| No. 22 From Jct Hwy 9 to Jct Hwy 47 | No. 225 From east border of NE-7-44-27-W2 (east of St. Isidore-de-Bellevue) to east border of NE-11-44-28-W2 (MO/3-969-2021-WI1) is 9-month primary. |
| No. 22 From Jct Hwy 47 to East Jct grid 617 | No. 229 From Jct Hwy 9 to Jct Hwy 47 |
| No. 30 From Eston Regional Park to Brock (SPECIAL RESTRICTION – 8,000kgs) | No. 247 From Jct Hwy 9 to Jct Hwy 47 |
| No. 31 From Jct Hwy 4 to 23.1 km west (SPECIAL RESTRICTION – 8,000kgs) | No. 307 From Jct Hwy 7 to 13 km North of Jct Hwy 7 |
| No. 31 From Herschel to grid 656 | No. 310 From Jct Hwy 52 to Grid 743 |
| No. 31 From 29.6 km East of Plenty to Plenty (SPECIAL RESTRICTION – 8,000kgs) | No. 310 From Jct Grid 743 to Jct Hwy 16 (SPECIAL RESTRICTION – 8,000kgs) |
| No. 42 From Riverhurst Ferry to Jct Hwy 373 | No. 310 From Jct Hwy 16 to Jct Hwy 5 |
| No. 42 From Jct Hwy 373 to Lucky Lake (SPECIAL RESTRICTION – 8,000kgs) | No. 312 From Wakaw to Rosthern |
| No. 42 From Lucky Lake to Jct Hwy 342 | No. 317 From Jct 51 to 12 KM North |
| No. 42 From its Jct with Hwy 44 (km 43.68) to its Jct with Hwy 15 (km 59.92), for a total of 16.2 km. (SPECIAL RESTRICTION – 8,000kgs) | No. 320 From Jct Hwy 20 to Domremy |
| No. 42 From Jct Hwy 342 to Dinsmore | No. 324 From Jct Hwy 378 to Mayfair |
| No. 44 From Jct Hwy 19 to Danielson Provincial Park Access (SPECIAL RESTRICTION – 8,000kgs) | No. 340 From Radisson to Hafford |
| No. 44 From Hwy 44 from 1.12km west of the junction of Hwy 219 to Hwy 45 | No. 342 From Jct Hwy 42 to Jct Hwy 4 |
| No. 44 From Dinsmore east to Macrorie | No. 342 From Jct Hwy 4 to Grid 647 (north of Lacadena) (SPECIAL RESTRICTION – 8,000kgs) |
| No. 44 From Dinsmore to Jct Hwy 4 | No. 349 From Jct Hwy 35 to 15 km East of Naicam |
| No. 44 From 3.2 Km's West of Eston to N. Jct. of 21 | No. 357 From Togo to Jct Hwy 8 |
| No. 45 From Birsay to Jct Hwy 15 | No. 365 From Manitou Beach to Plunkett |
| No. 45 From 8 kms South of Swanson to Delisle | No. 373 From Jct Hwy 42 to Birsay |
| No. 47 From Willowbrook to Buchanan | No. 374 From Jct Hwy 14 to Tramping Lake |
| No. 47 From 1 km North of Buchanan to Preeceville | No. 376 From Asquith to Jct Hwy 40 |
| No. 52 From Willowbrook to Homefield | No. 378 From Jct Hwy 4 to Jct Hwy 324 |

The following Access Roads will be subject to Spring Road Restrictions at 12:01 am, Monday March 30, 2026.

No. 2	Imperial Access	No. 15	Sovereign Access
No. 2	Simpson Access	No. 16	Jansen Access
No. 2	Meacham Access	No. 16	Guernsey Access
No. 2	Dana Access	No. 16	Plunkett Access
No. 2	Wakaw Lake Park Access	No. 16	Viscount Access
No. 2	Cudworth Access	No. 16	Bradwell Access (SPECIAL RESTRICTION – 8,000kgs)
No. 4	Cando Access	No. 16	Dalmeny Access from Jct 16 to Jct 305
No. 4	Metinota Access	No. 19	Strongfield Access
No. 4	Aquadeo Access	No. 19	Hawarden Access
No. 5	From Leroy to 6.45 kms West	No. 20	Middle Lake Access
No. 5	Veregin Access	No. 20	St. Benedict Access
No. 5	Mikado Access	No. 20	Tway Access
No. 5	Kuroki Access	No. 22	Atwater Access
No. 5	St. Gregor Access	No. 22	Grayson Access
No. 5	Peterson Access	No. 22	Gerald Access
No. 5	St. Denis Access	No. 23	Caragana Access
No. 8	Wroxton Access	No. 27	Aberdeen Access
No. 9	Dubuc Access	No. 31	Herschel Access
No. 9	Crystal Lake Access	No. 35	Wishart Access
No. 9	Ebenezer Access	No. 40	Speers Access
No. 9	Endeavour Access	No. 40	David Laird Campground Access (YEAR ROUND RESTRICTION – 8,000kgs)
No. 9	Gorlitz Access	No. 41	Hwy 41 North to Aberdeen
No. 9	Tadmire Access	No. 44	Plato Access
No. 11	Kenaston bypass/alternate	No. 44	Glidden Access
No. 11	Hanley Access	No. 45	Coteau Beach Access
No. 11	Dundurn Access	No. 49	Hazel Dell Access
No. 11	Gruenthal Access	No. 49	Hyas Access
No. 11	Blumenthal Access	No. 49	Stenen Access
No. 11	Neunlage Access	No. 51	Handel Access
No. 12	Hepburn Access (SPECIAL RESTRICTION – 8,000kgs)	No. 51	Ruthilda Access
No. 12	Gruenfeldt Access	No. 51	Major Access
No. 12	Waldheim Access (SPECIAL RESTRICTION – 8,000kgs)	No. 80	Yarbo Access
No. 14	Senlac Access	No. 219	Glenside Access
No. 15	Service Road – All thin membrane surfaced roads from Fenwood to Leross	No. 219	Riverside Estate Access
No. 15	Punnichy Access	No. 219	Furdale Access
No. 15	Conquest Access	No. 312	Laird Access (SPECIAL RESTRICTION – 8,000kgs)
No. 15	Milden Access	No. 349	Saint-Front Access

The following Rural Municipalities will be subject to Spring Road Restrictions at 12:01 am, Monday March 30, 2026.

No.	183	FERTILE BELT	No.	247	KELLROSS
No.	184	GRAYSON	No.	251	BIG ARM
No.	214	CANA	No.	255	COTEAU
No.	215	STANLEY	No.	256	KING GEORGE
No.	241	CALDER	No.	260	NEWCOMBE
No.	243	WALLACE	No.	271	COTE
No.	244	ORKNEY	No.	273	SLIDING HILLS
No.	245	GARRY	No.	274	GOOD LAKE
No.	246	ITUNA BON ACCORD	No.	275	INSINGER

No.	276	FOAM LAKE	No.	352	HEART'S HILL
No.	280	WREFORD	No.	366	KELVINGTON
No.	281	WOOD CREEK	No.	368	SPALDING
No.	282	MCCRANEY	No.	369	ST. PETER
No.	283	ROSEDALE	No.	370	HUMBOLDT
No.	284	RUDY	No.	371	BAYNE
No.	286	MILDEN	No.	372	GRANT
No.	290	KINDERSLEY	No.	373	ABERDEEN
No.	301	ST. PHILIPS	No.	376	EAGLE CREEK
No.	303	KEYS	No.	377	GLENSIDE
No.	304	BUCHANAN	No.	378	ROSEMOUNT
No.	307	ELFROS	No.	379	REFORD
No.	312	MORRIS	No.	380	TRAMPING LAKE
No.	315	MONTROSE	No.	381	GRASS LAKE
No.	316	HARRIS	No.	382	EYE HILL
No.	318	MOUNTAIN VIEW	No.	395	PORCUPINE
No.	319	WINSLOW	No.	399	LAKE LENORE
No.	320	OAKDALE	No.	400	THREE LAKES
No.	321	PRAIRIEDALE	No.	402	FISH CREEK
No.	333	CLAYTON	No.	403	ROSTHERN
No.	334	PREECEVILLE	No.	404	LAIRD
No.	335	HAZEL DELL	No.	405	GREAT BEND
No.	336	SASMAN	No.	406	MAYFIELD
No.	339	LEROY	No.	409	BUFFALO
No.	340	WOLVERINE	No.	410	ROUND VALLEY
No.	341	VISCOUNT	No.	411	SENLAC
No.	343	BLUCHER	No.	431	ST. LOUIS
No.	344	CORMAN PARK	No.	435	REDBERRY
No.	345	VANSCOY	No.	436	DOUGLAS
No.	346	PERDUE	No.	437	NORTH BATTLEFORD
No.	347	BIGGAR	No.	438	BATTLE RIVER
No.	349	GRANDVIEW	No.	440	HILLSDALE
No.	350	MARIPOSA	No.	468	MEOTA
No.	351	PROGRESS			

Signed on behalf of the Minister on this 27th day of March 2026.

Lana Eering
 Government of Saskatchewan
 Ministry of Highways
 Manager, Highway Hotline/Emergency Planning Officer

The following Provincial Highways are subject to Spring Road Restrictions.

- | | | | |
|--------|--|---------|--|
| No. 2 | From U.S. Border to St. Victor Access | No. 99 | From Craven to Jct Hwy 6 |
| No. 13 | Cadillac to Junction 37 | No. 202 | Jct Hwy 2 to Buffalo Pound Park |
| No. 13 | North Jct Hwy 21 to Alberta Border | No. 220 | From Jct Hwy 20 to Jct 322 |
| No. 18 | From Jct Hwy 6 to East Jct Hwy 36 | No. 221 | Jct Hwy 21 to Cypress Hills Park Gate |
| No. 18 | From Jct Hwy 35 to Jct Hwy 6 | No. 271 | Maple Creek (Jct Hwy 21) to Fort Walsh |
| No. 18 | From West Jct Hwy 36 to Rockglen | No. 301 | From Jct Hwy 1 from 200 metres north of the bridge to Buffalo Pound Park |
| No. 18 | From Ponteix Grid to Jct. 13 at Robsart | No. 306 | From Riceton to Jct Hwy 6 (SPECIAL RESTRICTION – 8,000kgs) |
| No. 18 | From Jct Hwy 2 to Ponteix Grid | No. 306 | From Jct Hwy 35 to Riceton |
| No. 19 | From East Jct Hwy 42 to Elbow Access | No. 308 | From Jct Hwy 8 to Grid 600 (SPECIAL RESTRICTION – 8,000kgs) |
| No. 19 | From Jct Hwy 18 to North Jct Hwy 363 | No. 308 | From Grid 600 to Manitoba Border |
| No. 22 | From Earl Grey to Jct Hwy 20 | No. 318 | From 2 km N of Jct Hwy 18 to Jct Hwy 361 |
| No. 21 | U.S. Border to West Jct Hwy 13 | No. 321 | Liebenthal (Jct Hwy 21) to 7 km East of the Alberta Border |
| No. 21 | East Jct Hwy 13 to Cypress Park Entrance | No. 332 | Jct Hwy 32 to 7.1 km West of Jct Hwy 32 |
| No. 21 | Jct Hwy 1 to 12 km South of Leader | No. 332 | 7.1 km West of Jct Hwy 32 to Hazlet (SPECIAL RESTRICTION – 8,000kgs) |
| No. 28 | From Jct Hwy 18 to Jct Hwy 377 | No. 334 | From Jct Hwy 13 to 3.3 km south of Jct Hwy 339 (SEE SPECIAL RESTRICTION 8,000 Kgs) |
| No. 34 | From U.S. Border to Jct Hwy 13 | No. 339 | From Jct Hwy 334 to Jct Hwy 39 |
| No. 35 | From Jct Hwy 48 to Jct Hwy 1 | No. 343 | Jct Hwy 4 to Simmie |
| No. 35 | From 3.8 km North of Jct Hwy 1 to Jct Hwy 10 | No. 350 | From U.S. Border to Jct Hwy 18 |
| No. 35 | From Jct Hwy 306 to Jct Hwy 33 | No. 358 | From Wood Mountain to Limerick |
| No. 35 | From Jct Hwy 33 to Jct Hwy 48 | No. 361 | From Manitoba Border to Jct 9 |
| No. 36 | From U.S. Border to Jct Hwy 2 | No. 363 | From 43 km West of Moose Jaw to Neidpath |
| No. 37 | U.S. Border to Climax | No. 363 | Neidpath to Jct Hwy 4 |
| No. 37 | 2.35 km North of Gull Lake to Cabri | No. 364 | From Km 19.08 to Km 36.45 |
| No. 42 | From the Jct of 367 to the Jct North Jct of 19. | No. 367 | From Jct Hwy 42 to Jct Hwy 19 |
| No. 43 | From Jct Hwy 4 to Jct Hwy 19 | No. 371 | Jct Hwy 21 to Alberta Border (SPECIAL RESTRICTION – 8,000kgs) |
| No. 44 | From 3 km south-west of Davidson (Meridian Road) to Jct. Hwy 19 (SPECIAL RESTRICTION – 8,000kgs) | No. 377 | From Jct Hwy 28 to Jct Hwy 6 |
| No. 44 | South Jct Hwy 21 to 3.33 km West of Mantario (SPECIAL RESTRICTION – 8,000kgs) | No. 379 | McMahon to 14.66 km East of Junction No. 4 |
| No. 44 | 3.33 kms West of Mantario to Alsask | | |
| No. 47 | From Handsworth Road to Jct Hwy 1 | | |
| No. 58 | From Jct Hwy 18 to Jct Hwy 13 | | |
| No. 58 | From N limits of Gravelbourg to Jct Hwy 1 | | |

The following Access Roads are subject to Spring Road Restrictions

- | | | | |
|-------|--|--------|---|
| No. 1 | Sintaluta Access | No. 2 | Mossbank Access |
| No. 1 | McLean Park Access | No. 4 | Blumehof Access (SPECIAL RESTRICTION – 8,000kgs) |
| No. 1 | Grand Coulee Access (SPECIAL RESTRICTION – 8,000kgs) | No. 4 | Rhineland Access |
| No. 1 | Caron Access (SPECIAL RESTRICTION – 8,000kgs) | No. 8 | Tantallon Access (SPECIAL RESTRICTION – 8,000kgs) |
| No. 1 | Rush Lake Access | No. 11 | Disley Access |
| No. 1 | Waldeck Access | No. 11 | Bethune Access |
| No. 1 | Webb Access from Km 0 to 1.87 Km | No. 11 | Findlater Access |
| No. 1 | Tompkins Access | No. 11 | Findlater Service Road |
| No. 1 | Piapot Access | No. 11 | Aylesbury Access |
| No. 2 | Sun Valley Beach Access | No. 11 | Craik Access |
| No. 2 | Holdfast Access | No. 11 | Girvin Access |
| No. 2 | Penzance Access | No. 11 | Davidson South |
| No. 2 | Liberty Access | No. 13 | Pangman Access |
| No. 2 | St. Victor Access | No. 13 | Khediye Access |

No. 13 Trossachs Access
 No. 13 Bellegarde Access (SPECIAL RESTRICTION – 8,000kgs)
 No. 13 Arcola Access
 No. 13 Forget Access (SPECIAL RESTRICTION – 8,000kgs)
 No. 13 Limerick Access
 No. 13 Verwood Access
 No. 15 Semans Access
 No. 18 Beaubier Access
 No. 18 Gladmar Access
 No. 18 Big Beaver Access
 No. 18 Fife Lake Access
 No. 18 McCord Access
 No. 19 Loreburn Access
 No. 19 Elbow Access
 No. 19 Kincaid Access
 No. 20 Duval Access
 No. 20 Bulyea Access
 No. 21 Golden Prairie Access
 No. 21 Mendham Access (JCT 21 to 8.1 KM West)(SPECIAL RESTRICTION – 8,000kgs)

No. 22 Dysart Access
 No. 22 Earl Grey Service Road
 No. 33 Osage Access Road
 No. 33 Kronau Service Access
 No. 36 Ormiston Access
 No. 39 Mc Taggart Service Road
 No. 39 Wilcox Service Road
 No. 39 Roche Percee Access
 No. 42 Marquis Access
 No. 42 Riverhurst Access
 No. 42 Tuxford Access
 No. 43 Palmer Access
 No. 48 Fairlight Access
 No. 48 Kendal Service Road
 No. 48 Odessa Service Road
 No. 48 Vibank Service Road
 No. 322 Kanata Valley Access
 No. 322 Saskatchewan Beach Access
 No. 363 Coderre Access
 No. 363 Shamrock Access
 No. 364 Edenwold Access

The following Rural Municipalities are subject to Spring Road Restrictions.

No. 6	CAMBRIA	No. 95	GOLDEN WEST
No. 7	SOURIS VALLEY	No. 96	FILLMORE
No. 8	LAKE ALMA	No. 97	WELLINGTON
No. 10	HAPPY VALLEY	No. 101	TERRELL
No. 11	HART BUTTE	No. 102	LAKE JOHNSTON
No. 12	POPLAR VALLEY	No. 103	SUTTON
No. 17	VAL MARIE	No. 104	GRAVELBOURG
No. 38	LAURIER	No. 105	GLEN BAIN
No. 40	BENGOUGH	No. 106	WHISKA CREEK
No. 42	WILLOW BUNCH	No. 107	LAC PELLETIER
No. 43	OLD POST	No. 108	BONE CREEK
No. 44	WAVERLEY	No. 109	CARMICHAEL
No. 45	MANKOTA	No. 110	PIAPOT
No. 46	GLEN MCPHERSON	No. 124	KINGSLEY
No. 49	WHITE VALLEY	No. 125	CHESTER
No. 51	RENO	No. 126	MONTMARTRE
No. 64	BROCK	No. 127	FRANCIS
No. 65	TECUMSEH	No. 128	LAJORD
No. 67	WEYBURN	No. 129	BRATT'S LAKE
No. 68	BROKENSHELL	No. 130	REDBURN
No. 69	NORTON	No. 132	HILLSBOROUGH
No. 70	KEY WEST	No. 133	RODGERS
No. 72	LAKE OF THE RIVERS	No. 134	SHAMROCK
No. 73	STONEHENGE	No. 135	LAWTONIA
No. 74	WOOD RIVER	No. 136	COULEE
No. 76	AUVERGNE	No. 137	SWIFT CURRENT
No. 77	WISE CREEK	No. 138	WEBB
No. 79	ARLINGTON	No. 141	BIG STICK
No. 94	HAZELWOOD	No. 151	ROCANVILLE

No.	152	SPY HILL	No.	225	CANAAN/LUCKY LAKE
No.	153	WILLOWDALE	No.	226	VICTORY
No.	154	ELCAPO	No.	229	MIRY CREEK
No.	155	WOLSELEY	No.	230	CLINTWORTH
No.	156	INDIAN HEAD	No.	231	HAPPYLAND
No.	157	SOUTH QU'APPELLE	No.	232	DEER FORKS
No.	158	EDENWOLD	No.	248	TOUCHWOOD
No.	159	SHERWOOD	No.	250	LAST MOUNTAIN VALLEY
No.	163	WHEATLANDS	No.	252	ARM RIVER
No.	164	CHAPLIN	No.	261	CHESTERFIELD
No.	165	MORSE	No.	277	EMERALD
No.	169	PITTEVILLE	No.	279	MOUNT HOPE
No.	171	FOX VALLEY	No.	285	FERTILE VALLEY
No.	187	NORTH QU'APPELLE	No.	306	PRAIRIE ROSE
No.	189	LUMSDEN	No.	314	DUNDURN
No.	190	DUFFERIN	No.	338	LAKESIDE
No.	191	MARQUIS	No.	398	PLEASANTDALE
No.	193	EYEBROW	No.	401	HOODOO
No.	194	ENFIELD	No.	427	TISDALE
No.	216	TULLYMET	No.	428	STAR CITY
No.	217	LIPTON	No.	429	FLETT'S SPRINGS
No.	218	CUPAR	No.	430	INVERGORDON
No.	219	LONGLAKETON	No.	457	CONNAUGHT
No.	220	MCKILLOP	No.	459	KINISTINO
No.	223	HURON	No.	464	LEASK
No.	224	MAPLE BUSH			

Please note that some provincial highways and bridges are subject to special reduced or restricted weights and some are for specific periods of the year, some for precise temperatures. A detailed description of these special restrictions is listed on the last four pages of this Order.

**The following section is not part of the Order but is appended as INFORMATION:
Special Weight Restrictions on Selected Provincial Highways.**

The following highways are subject to reduced weights, year-round, by regulation in accordance with the *Vehicle Weight and Dimension Regulations, 2010*

Hwy	Bridge Location Description
2	Bridge over West Poplar Creek from Southern Bridge Abutment to Northern Bridge Abutment. Bridge is located approximately 1.1 km north of the Canada/U.S.A. border.

Hwy	From	To	Description
955	South abutment of the Douglas River Bridge	Northern most limit of Highway 955	Maximum GVW 41 500 kg

The following BRIDGES are restricted by Minister's ORDER to a maximum gross vehicle weight of Secondary Weights year-round. Winter Weights are not allowed.

Hwy	Bridge Location Description
2	Bridge over Little Red River from Southern Bridge Abutment to Northern Bridge Abutment. Bridge is located approximately 4.4 km south of Jct. with Hwy 355 and Hwy 2 near Spruce Home. Bridge is located on East Frontage Road.
3	Bridge over Red Deer River from Eastern Bridge Abutment to Western Bridge Abutment located approximately .5km west of Erwood, Sk.
4 Metinota Access	Bridge over Jackfish Narrows from Eastern Bridge Abutment to Western Bridge Abutment. Bridge is located in access road approximately 3.1km west of the Jct. with Hwy 4. (Bridge is located on access road).
312 Gabriel Dumont Bridge	Truss Bridge over South Saskatchewan River from Eastern Bridge Abutment to Western Bridge Abutment.
919	Bridge over Martineau River from Southern Bridge Abutment to Northern Bridge Abutment. Bridge is located approximately 39.5km northwest of the Jct. with Hwy 21 and Hwy 950
925 Dillion River	Bridge over Dillion River from the Eastern Bridge Abutment to Western Bridge Abutment. Bridge is located approximately 0.25 east of Northern Hamlet of St. George's Hill.
935	Bridge over Morin River from the Southern Bridge Abutment to the Northern Bridge Abutment. Bridge is located approximately 7km north of the Jct. with Hwy 165 and Hwy 935.
955 Clearwater Truss Bridge	Truss Bridge over Clearwater River from Southern Bridge Abutment to Northern Bridge Abutment. Bridge is located approximately - 62 km north of Jct 155 and 955 to the Clearwater Bridge.
980 Elbow Lake Access	Bridge over Midnight Creek from Eastern Bridge Abutment to Western Bridge Abutment. Bridge is located approximately .3 km west of Elbow Lake, Sk. The bridge is located on Spirit Lake/Elbow Lake access road.

The following BRIDGES are restricted by Minister's ORDER to a maximum gross vehicle weight of Primary Weights year-round. Winter Weights are not allowed.

Hwy	Bridge Location Description
2	Southbound Bridge over Hwy 1 from Southern Bridge Abutment to Northern Bridge Abutment. Bridge is located north of Moose Jaw Sk. at Jct with Hwy 1 and Hwy 2
6	Bridge over Barrier River Overflow from Southern Bridge Abutment to Northern Bridge Abutment. Bridge is located approximately 25.7 km south of Melfort, Sk.

The following highways are restricted by Minister's ORDER to a maximum gross vehicle weight of 8 000 kilograms year-round.

Highway	From	To
1 Caron Access	Jct Hwy 1	Hamlet of Caron
1 Grand Coulee Access	Jct Hwy 1	Village of Grand Coulee
2 Eastside Service Road near Prince Albert	Jct Boundary Street East Service Rd north	Jct Township Road (approx. 2.4 kms)
4 Blumenhof Access	Jct Hwy 4 east	Blumenhof
6 Leroy Access	Jct Hwy 6	Town of Leroy
8 Tantallon Access	Jct. Hwy 8	Village of Tantallon
12 Hepburn Access	Jct. Hwy 12	Village of Hepburn
12 Waldheim Access	Jct. Hwy 12	100 meters west of the west boundary of NW 15-42-5 W3M in the town of Waldheim.
13 Bellegarde Access	Jct. Hwy 13	Bellegarde
13 Forget Access	Jct. Hwy 13	The Village of Forget
15	Jct. Hwy 16	Jct. Hwy 9
16 Bradwell Access	Jct. Hwy 16	Village of Bradwell
21 Mendham Access	Jct Hwy 21 Mendham Access	Intersection with the North-South portion of the Municipal Alternate Truck Route
30	Eston Regional Park located at the southwest corner of Section 20, Township 23, Range 20, West 3rd Meridian	The jct. of municipal Hwy located at the north-east corner of Section 34, Township 28, Range 20, West 3rd Meridian
31	Jct. Hwy 4	Herschel Access Road
31	Grid 656 at NW corner of Section 34, Township 31, Range 17, west of the 3rd Meridian	The intersection of the Plenty grid at the NW corner, Section 21, Township 32, Range 19, west of the 3rd Meridian
39 Bienfait Access	Jct Hwy 39	Jct Hwy 18 (In the Town of Bienfait)
40 David Laird Campsite Road	Jct No. Hwy 40	Jct Hwy No. 16
41 Alvena Access	Jct Hwy 41	2nd Avenue in Village of Alvena
42	Jct Hwy 42 - Keeler Service Road/Railway Ave. S.	Keeler Service Road/Railway Ave. to RM Road 643
42	Jct Hwy 373	Jct Hwy 45 in the Town of Lucky Lake
42	From its Jct with Hwy 44 (km 43.68)	its Jct with Hwy 15 (km 59.92), for a total of 16.2 km.
44	Jct Hwy 19	Junction with the Danielson Provincial Park Access located in the southeast of Section 32, Township 26, Range 6, West of the 3rd Meridian.

44	Jct Hwy 21	Westerly to the Jct with the municipal road located in the NE 1/4 of Section 24, Township 26, Range 27, west of the 3rd Meridian
44	Jct with the municipal road located at the SW 1/4 of Section 26, Township 26, Range 27, west of the 3rd Meridian	Jct with the municipal road located east of Section 31, Township 26, Range 27, west of the 3rd Meridian
306	Riceton	Jct Hwy 6
308	Jct Hwy 8	Jct with Primary Grid 600
310	Jct of Grid 743	Jct of Hwy No. 16
312 Laird Access	Jct Hwy 312	The Village of Laird
332	7.1 km west of Jct Hwy 32	The Village of Hazlet except for that portion between the east and west Jct of Hwy 37
334	Jct Hwy 13	3.3 km south of Jct Hwy 339
342	Jct Hwy 4	Jct of Primary Grid 647 north of Lacadena
371	Jct Hwy 21	Alberta Border

The following highways are restricted by Minister's ORDER to a maximum gross vehicle weight of 8 000 kilograms from March 1st to November 30th each year.

Hwy	From	To
302	Cecil Ferry Road at the SE corner of Section 22, Township 48, Range 24, west of the 2nd Meridian	Jct of the municipal road located at SE corner of Section 5, Township 49, Range 22, west of Second Meridian (located by the Weldon Ferry)

The following access road is restricted by Minister's ORDER to a maximum gross vehicle weight of 8 000 kilograms from March 1st to November 30th each year.

Hwy	From	To
2 Paddockwood Access	Jct Hwy 2	Grid Road intersection NE Section 23, Township 52, Range 25, W2nd Meridian

The following highway is restricted by Minister's ORDER to a maximum gross vehicle weight of 8 000 kilograms from March 15th to November 15th each year and when the ambient temperature is above -6°C.

Hwy	From	To
8	0.5 km North of Junction Highway 49 at Norquay	The community of Swan Plain at the south boundary of SE 27-36-1-W2M

The following Access Road is restricted by Minister's ORDER to a maximum gross vehicle weight of 8 000 kilograms from February 24 to November 15th each year and when the ambient temperature is above -6°C.

Hwy	From	To
35 Aylsham Access	Hwy 35 (NW corner of section 32, township 48, range 14, west of second Meridian)	Aylsham (NE corner of section 34, township 48, range 13, west of second Meridian)

The following highway is restricted by Minister's ORDER to a maximum gross vehicle weight of 75% of primary highway weights, except during winter weight season, when winter secondary weights shall apply.

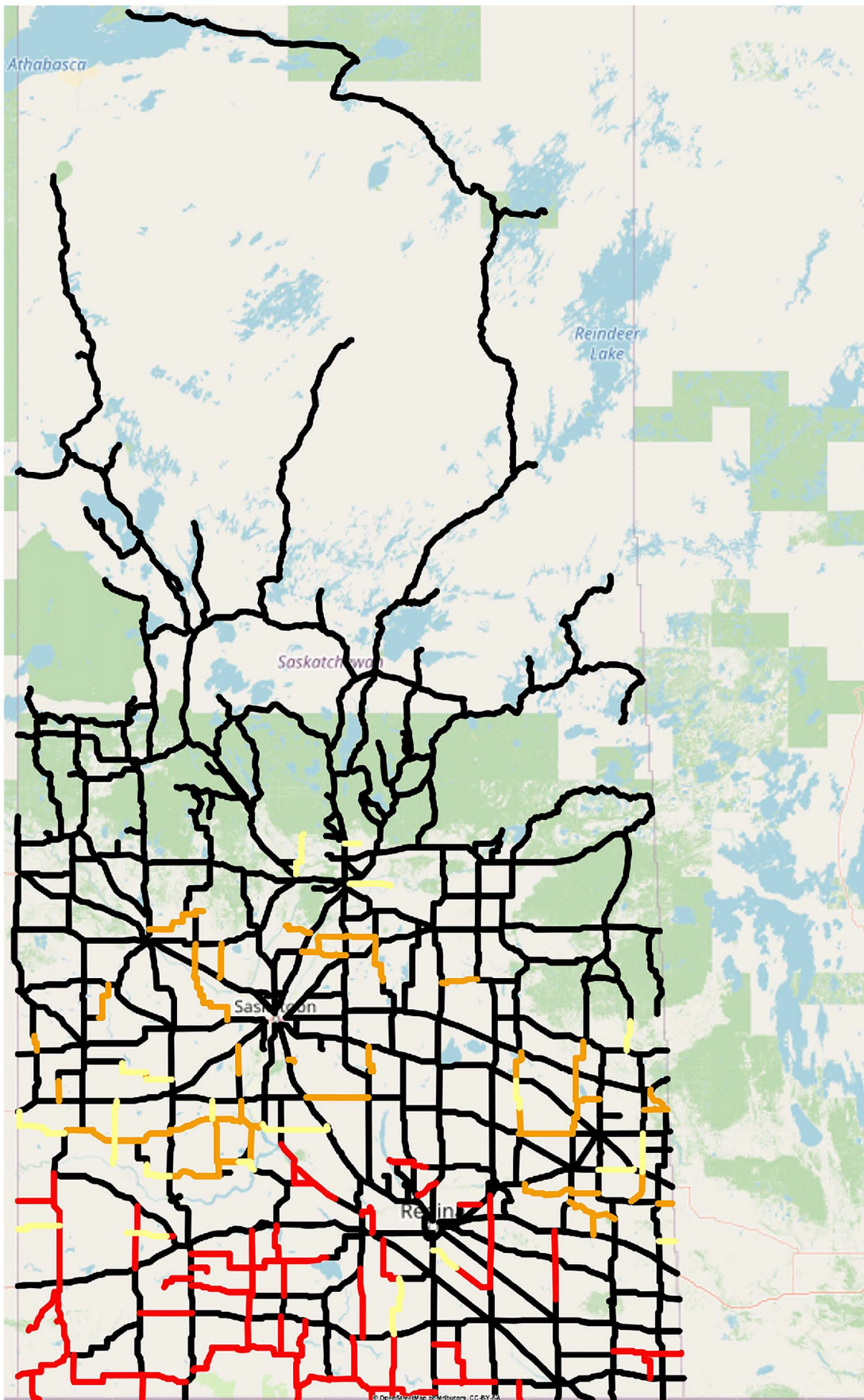
Hwy	From	To
240	Junction Highway 55	No. 240 - From Jct Hwy 55 to Prince Albert National Park SPECIAL RESTRICTIONS – 4.5 kg per mm (252 lbs/in) width of tire (manufacturer's stamped dimension) on any wheel to a maximum GVW of 22,686 kg (50,000 lbs), including the steering axle.

For detailed information on Rural Roads, call the local rural municipality or for Provincial Highway information email the Highway Hotline hotline@gov.sk.ca. The rural municipality administers and maintains the alternate haul routes. They are also responsible for issuing any overweight permits associated with the alternate haul routes.

Saskatchewan Ministry of Highways and Infrastructure provides seasonal highway restriction information on the Internet at: <http://www.saskatchewan.ca/truckingweights> under Special Weights.

Truckers can also contact the Saskatchewan Ministry of Highways, Trucking inquiry line at Toll free in Saskatchewan: 1-866-933-5290 Out of Saskatchewan: 306-933-5290 email: mhitrucking@gov.sk.ca

Saskatchewan! Spring Road Restriction 2026 - Order 4



- Spring Weight Season**
 - No Restrictions
 - Restricted
 - Future Restrictions
- Special Weight Restrictions**
 - Special Weight Restrictions
- Winter Weight Season**
 - In Effect
 - Not In Effect
 - Future Restrictions

Notes