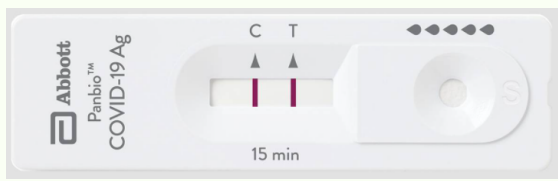


SELF-TEST

WHAT TO DO WITH THE RESULTS OF YOUR AT HOME SELF-TESTING KIT

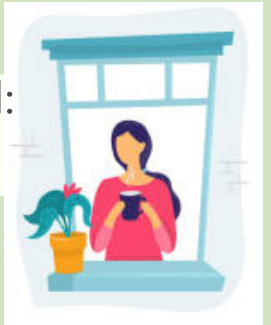
IF YOU HAVE A POSITIVE SELF-TEST



If you are fully vaccinated:
Please wear a mask



If you are not fully vaccinated:
Please isolate



YOU WILL NEED A LAB TEST

With a negative lab test
masking is now voluntary
and isolation can stop

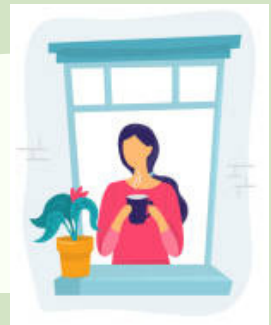
With a positive lab test,
please isolate for 14 days

WHEN A MEMBER OF YOUR HOUSEHOLD HAS A POSITIVE SELF-TEST BUT YOUR SELF-TEST IS NEGATIVE

If you are fully vaccinated:
Please wear a mask



If you are not fully vaccinated:
Please isolate until the results of
your household members lab test
results come back



WHEN A MEMBER OF YOUR HOUSEHOLD HAS A POSITIVE LAB TEST BUT YOUR SELF-TEST IS NEGATIVE

If you are fully vaccinated: Continue
to mask until the positive person is
out of isolation



If you are not fully vaccinated:
Please isolate until the positive
person is out of isolation

